

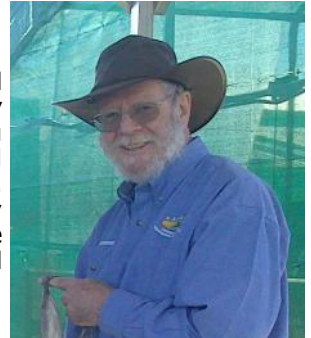
# Annual Report 2019/20



**2019/2020**  
**Financial year**

## Chairperson's Annual Report

I wish to start my report this year by saying thank you to all those who have made it possible for us to function effectively in what has been a challenging year for all. Thank you particularly to all those organisations whose grants and sponsorships have provided the funding we need to operate. These include Mackay Regional Council, Sarina Community Branch Bank, NQ Bulk Ports, Reef Catchments, Dalrymple Bay Coal Terminal Pty Ltd, Dalrymple Bay Coal Terminal Management, QLD and Australian Government.



*Mark Evans, Chairperson*

I also wish to thank the staff whose often selfless dedication has seen a great renewal in the life of SLCMA. Saskia as Coordinator, Kristy as Administration Officer, Morgan as Project Officer, Davina as Nursery Officer and Alana with the Revegetation team, you have all been wonderful this year.

I also wish to thank the Management Committee for your dedication and contributions in the year past. The volunteers too have contributed markedly in the year past. It has not been easy for any with the advent of the Covid restrictions that impacted pretty much everything we do.

At our Annual Meeting last year, we had completed the review of structures and positions and were about to go through the process of selecting and appointing new staff. Consequently, Alana was appointed as the Revegetation Leading Hand, Davina was appointed as the Nursery Officer and Morgan as Project Officer. The results have been a smooth working group that has achieved excellent results for the year. Sadly, Davina's health took a turn for the worse and we have had to say goodbye to her. We wish her a speedy resolution to her health issues and would welcome her back at any time should the opportunity eventuate. We must now begin the process of finding another Nursery Officer. Fortunately, as our finances seem to have prospered as well as the staffing, this seems to be more of a matter of finding the right person rather than "can we afford this".

The BIG issue that has impacted everything we do has been the Covid 19. All the way through we have done our best to continue under Covid safety rules. This meant that the staff worked from home where possible, where the office was only open by appointment and where the Volunteers were unable to meet on Wednesdays. The nursery was kept up by staff, particularly Davina, working in isolation. A Click and Collect plant order system was developed which has been quite successful. The management committee continued to meet regularly through phone conference calls and this worked well. The office is once again open and the Volunteers are again meeting on Wednesdays. Current restrictions mean that contact details are kept for all attending, hand sanitiser is always on hand for use and social distancing requirements are being met.

There have been several improvements and events during the year that we should note. These include First Aid Training funded by Mackay Regional Council, the deployment of the 'Sarina Catchment' advertising sign in the south, funded by the Sarina Community Bank Branch and the revision of our brochure, funded by NQ Bulk Ports. It also includes the installation of solar panels to the nursery area funded by the Sarina Community Bank Branch. It is also good to see improvements to the plumbing in the nursery, with new irrigation fittings and improvements to the hand and pot washing facilities.

In September 2019, we celebrated 30 years of Landcare across Australia. We reintroduced visits to Sarina Market but this was shut down due to Covid restrictions. We will recommence this at some time in the future. There was also a Land for Wildlife field trip to Demoleyns Lagoon.

Staff training throughout the year, has included Saltmarsh value and threat assessment, Biocondition training, vegetation management training, a Streambank Restoration workshop and a Healthy Soils symposium. Members of the Management Committee attended a Governance training session and the material from this is currently in circulation amongst members as one way for us to improve what we do.

*Continued over page...*

<i>Inside this issue:</i>	
<b>Chairperson's Annual Report</b>	<b>1 – 2</b>
<b>Coordinator Report</b>	<b>2</b>
<b>Project Officers Report</b>	<b>2</b>
<b>19/20 Management committee members &amp; staff</b>	<b>2</b>
<b>SLCMA:</b> • Organisational objectives • Vision and Goals • Membership 19/20	<b>3</b>
<b>Membership benefits</b>	<b>4</b>
<b>Communication &amp; publications</b>	<b>4</b>
<b>SLCMA Office: resource centre and educational precinct</b>	<b>4</b>
<b>Program/ project updates</b>	<b>5-9</b>
<b>Working Groups Supported</b>	<b>9</b>
<b>Supporting Community Events</b>	<b>9</b>



## Chairperson's Report ...continued ...

The Revegetation team has continued to do lots of planting and site maintenance at various sites within our area.

Our occasional general meetings have been held on Wednesdays to enable the volunteers to participate. Today's Annual meeting has also been set with this in mind.

If anyone has any questions, I will be happy to attempt to answer them. If there are no further questions, I hereby move the acceptance of my report.  
Mark Evans, Chairman, 21/10/2020

## Coordinator's Report

To say 2019/20 has been a strange year, is possibly a bit of an understatement...thankfully through innovation, flexibility and a bit of sense of humour we have been able to continue operating where possible and in some cases diversify how we deliver some activities .....That said, I am proud to be a part of the SLCMA team of staff, management committee and volunteers who have supported each other and the organisation, through the tough times.

As you can see in this annual report, we have continued to deliver a diversity of projects and programs within the Sarina Catchment—from feral pig control and revegetation projects; to land management support, native plant propagation, volunteer opportunities and community awareness raising events, just to name a few.

This is only possible through the commitment of all the SLCMA team; through the successful application for project funding and sponsorships (for which we are grateful) and; ongoing collaboration with our project partners and stakeholders.

I am looking forward to our next year ahead and continuing to support our volunteers, Landcare members, landholders and community members within the Sarina Catchment.  
Saskia von Fahland, Coordinator



## Project Officer's Report

It has been an absolute pleasure working for SLCMA in partnership with all our community members and stakeholders over the past 10 months. It has been extremely rewarding to be helping local landholders with natural resource management. I have learned so much from all of you and am eager to continue this development to ensure SLCMA's strategic and effective assistance with natural resource management.

I have had the privilege of contributing to the continued delivery of a variety of projects for SLCMA. My favourite project to deliver and work on has been the Land for Wildlife Program (LfW), a voluntary conservation program to recognise and assist landholders in protecting and providing habitat for wildlife on their property.

I have also enjoyed being involved in the delivery and wrap up of the 3 year "Riparian Rehabilitation after Cyclone Debbie Project", particularly assisting landholders in the Sarina Catchment to stabilise creekbanks and strengthen riparian areas, to reduce erosion and build resilience into the local waterways.

I had the pleasure of delivering a new water quality monitoring project in early 2020 which allowed us to gain a greater understanding of the levels of nutrients and pesticides entering local waterways within the Plane Basin. Both SLCMA staff and landholders collected water samples for the project, which were then sent to the laboratory for analysis. I enjoyed examining the data and writing the final report for the project. The final report with water quality data from SLCMA sampled sites will be released to the public in the coming months so keep an eye out for that!  
Morgan Thomas, Project Officer



## 2019/20 Management Committee Members and Staff

### Management Committee Members:

<b>Chair</b>	Mark Evans
<b>Vice Chair</b>	Karen May
<b>Treasurer</b>	Kevin Plumb
<b>Secretary</b>	Shirley Sidey
<b>Management Committee Members</b>	
	Sandra Evans
	Lachlan McBride

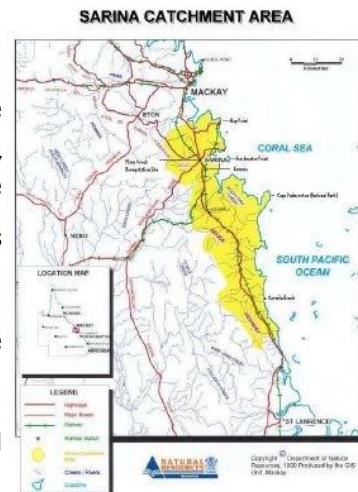
### Staff:

<b>Coordinator</b>	Saskia von Fahland ( <i>part-time</i> )
<b>Administration Officer</b>	Kristy Thomsett ( <i>part-time</i> )
<b>Project Officer</b>	Morgan Thomas ( <i>part-time</i> )
<b>Revegetation Team Leader</b>	Alana Campbell ( <i>casual</i> )
<b>Nursery Officer</b>	Davina Wain ( <i>part-time</i> )
<b>Revegetation Officers</b>	Peter Whitehead, Winka von Fahland, Malcolm Warfield, Bethany Alefson ( <i>casual</i> )

# Organisational Objectives

The objectives of Sarina Landcare Catchment Management Association Inc. are:

- To promote a strategic and integrated approach to natural resource management and biodiversity conservation in the Sarina Catchment area.
- To foster coordination and cooperation between land managers, community groups, industry and government agencies in their natural resource management activities.
- To promote understanding and awareness of the interactions and relationships between the natural systems and resources of the catchment.
- To identify and prioritise natural resource management issues within the Sarina Catchment Area.
- To prepare, coordinate and implement priority action plans identified in the Sarina ICM Strategy.
- To promote sustainable solutions and actions through strong community, industry and government partnerships in catchment management strategies.
- To provide a forum for community and government discussion on natural resource and catchment management issues.



## SLCMA's Vision and Goals

### Vision for the Sarina Catchment

*The Sarina Catchment Area is an economically viable region, which is ecologically sustainable and well regarded as a healthy place to live and work*

### Goals

- Land Use Planning:** The land resources of the Catchment are managed in an ecologically sustainable manner.
- Land Management:** The most appropriate ecologically and economically sustainable land management practices are adopted throughout the catchment.
- River/Creek Management:** The creek systems are managed in such a way as to enhance and maintain their natural values while providing for the needs of the catchment community.
- Water Management:** The integrity of the natural systems within the catchment are enhanced and maintained while providing water of a suitable quality and quantity to meet the needs of the community.
- Coastal Management:** Management of the coastal area in a way that will ensure the sustainable use of the natural resources
- Vegetation/Biodiversity:** The native vegetation and biodiversity values of the catchment are enhanced and maintained and the natural systems are not further degraded.
- Community Awareness and Involvement:** A community that is aware of the need to maintain and improve the natural resources of the catchment and is actively involved in doing so.

## SLCMA Membership 2019/20

Class of Membership	Is membership of the class to be limited or unlimited in number?	If the class of membership is to be limited in number, how?	Limitations relating to the class of membership	Entry requirements for class of membership	Number of members
Government Organisation Member	Unlimited	N/A	1. Full voting rights	Open to nominated Councilors of local authorities within the Association's catchment area, and nominated officers of State Government departments or authorities, or divisions or branches within them.	15
Associate Member	Unlimited	N/A	1. Full voting rights	Shall be opened to nominees of: Companies and Cooperatives carrying out activities within the Catchment area. Local organizations and institutions. Local groups with a direct interest in land use	37
Ordinary Landcare Member	Unlimited	N/A	1. Open to any adult owners or occupiers of land 2. Full voting rights	1. Must be over 18 years of age 2. Annual fee for membership, the amount to be decided at an annual general meeting	95
Junior Member	Limited	There are to be no more than 50 Junior members at any time	1. May not vote 2. Not eligible for election to management committee positions	1. Must be under 18 years of age 2. Must be a registered Junior Landcare member.	11



## SLCMA Membership benefits!



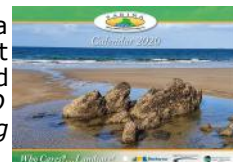
A membership with SLCMA has many rewards:

- ◇ Easy access to Natural Resource Management information and extension
- ◇ Monthly newsletter, meeting minutes, progress and project reports
- ◇ A vote on issues in your catchment
- ◇ A say in the types of projects applied for
- ◇ Up to 10 free local native seedlings from the SLCMA Community Nursery each year
- ◇ Invitations to Natural Resource Management bus tours, field days and workshops

## Communication & publications



- **SLCMA Catchment News** is distributed monthly to approximately 300 recipients. The newsletter is a great way for members to keep up-to-date with available funding, workshops, field days, volunteer opportunities and the latest in natural resource management news. *Thankyou to Michelle Landry MP for producing colour copies of the newsletter for our members.*
- **SLCMA website and facebook page** are a great way for the community and members to keep up-to-date with what is happening in our catchment. *Thankyou to Kapow Interactive for their support towards the SLCMA and associated Central QLD Coast Landcare Network website.*
- **SLCMA Calendar 2020** was well received by members, schools and volunteers. It is a great opportunity to showcase places of interest and critters from around the catchment. It also includes important dates such as meetings, environmental awareness events and cattle sales. *Thankyou to Mackay Regional Council, Dalrymple Bay Coal Terminal PTY LTD and Dalrymple Bay Coal Terminal Management for their contribution towards the printing costs.*
- **SLCMA Brochure** provides a quick insight into SLCMA, our projects and programs and how community members can become involved in Landcare within the Sarina Catchment. It is a handy brochure that we can distribute amongst the community and raise the profile of SLCMA. *Thankyou to NQ Bulk Ports for their sponsorship of the updated SLCMA Brochure.*
- **Plane Basin Grower Led Water Quality Monitoring Program: Event and Ambient Monitoring Report 2020**, provides an insight into the water quality within local sub-catchments and improve our understanding of chemical mobility and persistence in a landscape, particularly during rain events. *This project was delivered for Reef Catchments Ltd and Department of Agriculture and Fisheries Enhanced Extension Coordination Project as part of the Plane Basin Grower Led Water Quality Monitoring and Engagement—Rocky Dam Ck Project stage 2.*



## SLCMA Office: resource centre and educational precinct

SLCMA is well supported by Mackay Regional Council; who allow us to operate from the building at 101 Beach Rd. The office is utilised by staff and volunteers in daily Landcare activities and as a resource centre for volunteers, members and landholders to access land management information. We have also created an educational precinct for community members within the surrounding area to include: Sustainable food gardens, Sarina Community Native Gardens, SLCMA Community Nursery and Water Treatment Train.

**Sustainable Food Gardens**—The working food gardens are monitored and cared for by volunteers. They provide an opportunity for volunteers to get their hands dirty and share in produce. The gardens include raised garden bed, rain garden, native bees and worm tubes as an opportunity for community members to learn about growing your own food in a sustainable manner.

**Worm farm & composting**—Learn about integrating wriggly worms and compost into your backyard garden system; to minimise waste, recycle nutrients and improve soil health.

**Water Treatment Train:** Wetlands are important to our community because they play a key role in providing biodiversity and hydrological functions vital to keeping the land, water, sea and Great Barrier Reef healthy and productive. This is a working display of a wetland system, demonstrating how natural and artificial wetlands function to remove sediment, nutrients and pesticides from the water that passes through them. The "Water Treatment Train" was installed in 2017 in collaboration with Department of Agriculture and Fisheries (DAF) and, consists of 4 connected chambers with local native water plants and educational signage.





## SLCMA Community Nursery

The SLCMA Community Nursery was built in 2003 by SLCMA volunteers and the Sarina Green Corps team. It is utilised as a training facility for the community and a base for the SLCMA Community Volunteer Program; to learn about native plants, plant propagation and general nursery practices. It also allows for the propagation of local native plants for local and regional rehabilitation projects, community projects, gardens and landscaping.

With the assistance of our volunteers, we produce over 4500 native plants annually. This has provided plants to our Landcare Members through plant allocations (up to 10 free native plants per member per year), Land for Wildlife program and projects such as Landholder Support Program, creekbank rehabilitation projects along Cherry Tree, Marion and Westhill Creeks and Plane Creek Revegetation Site. We also continue to sell plants to the community, with the funds raised, put back in, to support the running costs of the nursery.

We continue to seek as many new local species to propagate and further diversify our species list. Our aim is to keep increasing our species availability and to keep supplying demand for quality, locally adapted plants. Thankyou to the Landholders who have given us permission to collect seed on their property and to some of you who have brought seed in throughout the year.



A big thankyou to our volunteers who assist staff on a weekly basis to keep our seedbank full and tend to the plants in the nursery.

We have had many visitors to the nursery throughout the year all of whom have provided positive feedback about the facility and are impressed with the opportunities it provides for the Sarina community, both socially and environmentally. During COVID restrictions, we implemented the 'click & collect' plant order program. This was a big success, with lots of community members making the most of purchasing our native plants.

A highlight for the SLCMA Community Nursery this year, was the installation of solar panels through funding received from the Sarina Community Bank Branch. We are grateful for the opportunity to install the solar panels, as they have improved the efficiency and sustainability of the daily operations within the nursery. *Thankyou to Sarina Community Bank Branch and also to Energybase, for their generous service in installing the panels.*



## SLCMA Community Volunteer Program

The SLCMA Community Volunteer Program is now in its 17<sup>th</sup> year. A big thankyou to all our volunteers past and present. This year we have welcomed a few new volunteers and continued to enjoy the company of our long-standing volunteers. A big thankyou to our volunteer team who have continued their dedication, coming along every Wednesday, 9am—12noon.

The volunteers mainly operate in the SLCMA Community Nursery undertaking cleaning and sowing seeds, potting up seedlings and of course, weeding. They have also been on a number of plant identification and seed collecting trips around the catchment including Plane Creek, Grasstree, Sarina and Hay Point Beaches. Also working in the Sarina Community Native Gardens.

This year, our volunteer mornings were greatly impacted by COVID restrictions, and hence were cancelled from March to July 2020; creating a noticeable gap in the production of native plants. During this time, our Nursery Officer Davina worked tirelessly to keep the nursery looking great and tending to the plants. We definitely missed our volunteers and thankfully we were able to keep in touch via email, phone and facebook. Restrictions lifted in mid July and our volunteers were welcomed back to our volunteer mornings. Thankyou to our volunteers who continue to join us in our Landcare activities.

The volunteer program have also contributed to our sustainable food garden throughout the year—providing herbs and other edible plants. It continues to be a great opportunity for volunteers to meet new people and learn about native plants and their propagation. *The SLCMA Community Volunteer Program receives much appreciated support from the Mackay Regional Council, Natural Environment Levy.*





## Sarina Community Native Gardens

In 2009 we began the journey of transforming an area of lawn adjacent to the SLCMA Office, into the Sarina Community Native Gardens. The purpose of the gardens is to demonstrate and promote the use of native plant in gardens and landscaping situations as well as provide an educational opportunity for locals & visitors to learn about local native plants, their benefits & uses in various situations.

The changes over the years have been amazing with many of the plants now flowering, seeding and providing habitat for a variety of native birds and wildlife. Over the time, we have achieved many milestones including the installation and extension of a seasonal wetland, walking track, boardwalk and themed gardens including the sensory gardens and local habitats. A highlight was the official opening in 2013 by gardening guru, Costa Georgiadis.

A big thankyou to Peter, who has been volunteering in the gardens since 2015. He dedicates his time to the gardens, keeping on top of the weeds in the wet season and keeping the plants alive during the dry, with lots of mulching and weeding.

We were successful throughout the year in applying for funding through the *Australian Government Community Environment Program* towards the gardens—with the aim to encourage new volunteers into the gardens through community working bees and workshops. It also has supported the SLCMA Revegetation Team to undertake some of the more hard yakka maintenance such as brushcutting, removing green waste and garden preparations. To date, we have already had two working bees with our volunteers that included planning, seed collecting and planting and we look forward to more events in the new year. We are excited about the possibilities and opportunities to develop the gardens further into the future and utilise it to its full potential.



## Land for Wildlife Program

The Land for Wildlife program is a voluntary program that recognises landholders who are making a significant effort to encourage and provide habitat for wildlife on their properties. This is achieved by conserving and actively managing habitat as well as integrating nature conservation with other land uses such as agriculture, grazing or tourism.



This year we were able to welcome seven new members to the program within the Sarina Catchment. We also had the pleasure of re-visiting eight of our current members to discuss topics such as plant identification, weed management advice and re-assess the progress of rehabilitation activities.

Landholders participating in the program receive a number of benefits including; a site visit from our Project Officer, a personalised land management plan (and links to further information), 20 free native plants per year, property re-visits, invitations to field days and workshops, quarterly regional newsletter and the opportunity to communicate with other members of the LfW program via a 'closed' Facebook page. Unfortunately, due to COVID-19, the land for wildlife fieldtrip was postponed, and will be rescheduled in 20/21.

*The Land for Wildlife program is delivered within the Mackay Regional Council boundaries of the Sarina Catchment by SLCMA and the Pioneer Catchment by Pioneer Catchment and Landcare Group (PCL); on behalf of the Mackay Regional Council Natural Environment Program. This coordinated approach provides consistency across the region and beneficial linkages to other complimentary projects and programs.*

## Coordinated Feral Pig Control Program

SLCMA continues to deliver the Coordinated Feral Pig Control Program across the Rocky Dam and Carmila Creek Catchments and for the first time, within the Clairview Catchment. The program in 19/20 was co-funded by private landholders, Reef Catchments and Plane Creek Productivity Services through the Plane Creek Farmers Action Group with funding from the Department of Agriculture and Fisheries.

The success of the program is attributed to a coordinated approach with landholders and stakeholders including Plane Creek Productivity Services, Council, Mackay Regional Pest Management Group, Department of Agriculture & Fisheries. It also compliments and aligns with other similar control programs across the wider Mackay Whitsunday region.

The program engages with over 50 landholders across a range of landuses (cane, grazing & horticulture), who participate voluntarily in one or more of the control methods, at different times of the year and at varying levels. The different control methods include trapping (available for loan from SLCMA), baiting (with Council) and an annual aerial control event. The annual aerial control event was held in December 2019 with a follow up event in January 2020, which led to over 345 feral pigs were controlled. This year we joined with the Plane Creek Farmers Action Group to help connect with local farmers in the program.

It is great that landholders are working together and recognise that a pig controlled a few kms away is still of benefit to them and their property. The coordinated approach allows for a large area of the catchment to be covered in a short space of time, increasing the potential to reduce feral pig numbers and hence reduce negative impacts on farming land and natural areas.



# Riparian Rehabilitation after Cyclone Debbie

We are about to wrap up our three-year, *Riparian Rehabilitation after Cyclone Debbie Project*, which finishes in October 2020. The project sought to address damage to riparian areas within the Sarina Catchment, in particular, those impacted by Cyclone Debbie in March 2017.

The project aimed to improve:

- ◆ The health of riparian areas and build resilience within the landscape
- ◆ Raise community awareness of the importance of riparian areas including habitat value, role in streambank health and water quality
- ◆ Increase community and landholder participation in rehabilitation activities along local creeks
- ◆ Increase landholder knowledge and capacity to protect and restore riparian areas

Through the project we were able to engage with 30 landholders across the Sarina Catchment and, provide advice and assistance towards their rehabilitation efforts along riparian zones. Landholders received a property visit to assess areas of concern, a personalised land management plan and information pack as well as 40 free local native plants and plant guard kits to assist in onground works. Some key aspects of the program looked to increase plant diversity through revegetating with native plants in order to prevent further erosion, strengthen and build resilience into the creekbanks.

The project also included onground works at the Plane Creek Revegetation Site. The site was impacted by Cyclone Debbie and also lends itself as a great demonstration site for community members. SLCMA worked alongside Mackay Regional Council staff and volunteers to undertake rehabilitation activities including revegetation of 900 native plants, weed control, litter collection, resource sharing training days for Madeira vine control and community working bees at the site. An awareness raising event demonstrating the 'importance of riparian zones and use of rehabilitation techniques' was well attended by the community.



## Other projects and grants

- **Sarina Landcare Support Project**—funded through Mackay Regional Council—Natural Environment Program. This project supports SLCMA to provide ongoing services to landholders and the general community through activities such as the SLCMA Community Volunteer Program, environmental awareness events, displays at local events, working with stakeholders, coordination of projects and workshops, support for local schools.
- **Rehabilitation of Carmila Beach Reserve**—funded through the Australian Government Communities Environment Program. This project involves targeted control of problematic weeds; within the Carmila Beach Reserve. Onground works will be focussed on disturbed areas adjacent to healthy, intact stands of vegetation with the aim to encourage natural regeneration of native plants and gain canopy cover as quick as possible. This will be supported by revegetation with 100 native plants.

- **Rehabilitation of Louisa Creek Reserve**—funded through the Australian Government Communities Environment Program. SLCMA is working in partnership with Mackay Regional Council and the community to undertake rehabilitation activities within the Louisa Creek Reserve including planting, watering, weed control and litter collection, to ensure the coastal vegetation is preserved. Louisa Creek Reserve is highly regarded by the community as a valuable coastal environment that provides a buffer between residential land and the important mangrove and estuarine habitat. It is registered under the Land for Wildlife Program and over the years has received support from many project partners to ensure its rehabilitation and protection. The proposed project aims to build on these works and tackle the main environmental issues of weed growth and fire threat due to fuel load.



- **Survey and Monitoring of Wetland Fishway**—funded through Australian Government Communities Environment Program. The project engaged and worked alongside Catchment Solutions to monitor and evaluate the successfulness of a recently installed rock ramp fishway into the Tedlands wetlands, which provides habitat for recreationally and commercially important fish species. The monitoring provided information about the fish (such as size, number and species) utilising the fishway as well as validate the cost-effective design of the structure for use at other sites throughout Queensland. The project will incorporate a community field day; to showcase the fishway and wetlands to the local community and promote the benefits to the biodiversity and fisheries resources that the fishway and associated wetlands provide.





## Other projects and grants

...continued..

- **Enhancing the Sarina Inlet Trail**—funded through the Australian Government Communities Environment Program. The "Sarina Inlet Trail" is a 400m bush walking track that meanders through a small but diverse area of native coastal vegetation at Sarina Beach. The trail is well utilised by residents and visitors, providing a link between Sarina Beach and Johnson Beach. Through this project, we will enhance the natural values of the area through onground works targeting weed control and revegetation with local native plants. We will also create awareness of the importance of the area by conducting a guided walk for the community to highlight the history and natural values of the area and by updating the sign at the entrance to the trail.
- **Rehabilitation of Streambanks**—funded through the Australian Government Communities Environment Program. The project will assist landholders to stabilise sections of creekbank by undertaking riparian rehabilitation activities including weed control, infill planting and watering at 10 sites along Westhill, Marion and Cherry Tree Creeks. Initial rehabilitation works including engineering works and revegetation were funded through Natural Disaster Relief and Recovery Arrangements in response to severe streambank erosion after Cyclone Debbie. This project will support the landholders in their commitment towards rehabilitating the creekbanks, and provide whole of catchment benefits.
- **'Friends of the Sarina Community Native Gardens' Pilot Program**—funded through Australian Government Communities Environment Program. Weedy garden escapees is a common well-known threat to our local environment. This project will improve the aesthetics of the Sarina Community Native Gardens and, encourage the community to use native plants in their own private gardens. By facilitating the 'Friends of the gardens' program, participants will undertake onground works that will enhance the layout, expand on and create new demonstration gardens. This project will utilise the Sarina Community Native Gardens as an educational site to encourage the utilisation of native plants as an alternative and educate the community on the impacts of weedy garden plants to our natural environment.
- **Sarina Catchment Waterwatch**—funded through QLD Citizen Science Grants. This three year project will monitor water quality from four freshwater creeks within the Sarina Catchment. The project will recruit, mentor and train community volunteers as citizen scientists to undertake monthly ambient water monitoring as well as SLCMA staff to conduct baseline water monitoring and sampling. The information collected will be used to determine how water quality is changing or has changed over time, within the creek systems.
- **Solar Panels for Community Nursery**—funded through Sarina Community Bank Grants Program. This grant provided funding towards the purchase and installation of solar panels at the SLCMA Community Nursery and associated Sarina Lions Club shed. It was a great opportunity to switch to solar, as a renewable energy source as well as reduce the electricity costs for both organisations.
- **Improving the safety and efficiency for SLCMA staff and volunteers**—funded through DBCT P/L Sponsorship Program. The sponsorship grant will enable SLCMA to upgrade some tools and equipment to improve the safety and efficiency of the SLCMA Community Nursery and volunteers including additional nursery benches, long-sleeve sun-safe shirts for volunteers, two-way radios, electrical test & tag of equipment and a blower.
- **Equipment purchase**—funded through Gambling Community Benefit Fund. The grant provided the opportunity to purchase a much needed equipment to ensure the health and safety and; efficiency of our daily operations both in the office and out in the field, when undertaking Landcare activities.
- **COVID-19 Recovery Assistance Grant**—funded through Mackay Regional Council. The project will assist in the recovery of SLCMA due to COVID-19. The grant will allow SLCMA to improve bathroom and kitchen hygiene such as equipment and supplies including: paper towel/soap/food dispensers and, food serving utensils as well as re-stock personal protective equipment, cleaning products and sanitisers.



## Supporting our local schools

SLCMA continues to provide support to our local schools, through the Landcare Support Project funded by Mackay Regional Council Natural Environment Program. This funding provides SLCMA the capacity to support local schools for up to 5 days per year with support such as providing technical advice, delivering educational activities, assisting teachers and students with resources and information and, seeking opportunities for additional funding for complimentary projects. While, COVID restrictions impacted our connection with schools during 2020, we were still able to provide support and undertake some activities with local schools including:

- National Tree Day with Homebush and Alligator Creek State Schools
- National Science Week activities with Homebush State School
- Delivering School Activity Days to celebrate Coastcare Week 2019 with local primary schools
- Sarina State High School Agricultural students—planting and learning about the importance of riparian vegetation and water quality.





## SLCMA Revegetation Team

The SLCMA Revegetation Team under the direction of Leading Hand Alana, have been working on a variety of rehabilitation projects throughout the Sarina Catchment. The sites are on both private landholder properties and as well as Council land; from freshwater riparian areas to coastal dunes and bushland.

The team do a great job preparing sites for revegetation, planting, watering and maintaining the sites in often variable weather conditions (depending on the season). Armed with brushcutters, cane knives & knapsacks the team tackle weeds of all kinds from weedy grasses and groundcovers to vines and shrubs.



While enjoying the outdoors, they also come across a range of critters including inquisitive cows, slithery snakes, chatty birds, sneaky ticks and scrub itch....just to name a few ;) They have been doing a great job and we thank all the team; Alana, Peter, Vynka, Malcolm and Bethany, for their contributions.



## Working Groups supported

SLCMA is proud to support the following working groups:

- Central QLD Coast Landcare Network
- Mackay Whitsunday Regional Pest Management Group
- Rocky Dam Creek Coordinated Feral Pig Working Group
- Healthy Rivers to Reef Partnership
- Mackay Whitsunday Isaacs Wetland Working Group
- Koala Working Group



## Supporting Community Events

SLCMA was out & about with Landcare displays at a range of locations and events throughout the year including:

- Sarina Cattle Sales
- Great Northern Clean Up
- Sarina Markets



## SLCMA is supported by:



37 Broad Street, Sarina  
Phone: 07 4943 2634

