

SLCMA Catchment News 2020



Jul/Aug 2020

Office: 101 Sarina Beach Rd
Postal: PO Box 682
Sarina QLD 4737
Phone: (07) 4956 1388
www.sarinalandcare.org.au
Email:
admin@sarinalandcare.org.au

*Office opening
hours:
9am-2pm weekdays.*

*Other times by
appointment, please
call 4956 1388 :)*

Staff

Administration Officer
Kristy Thomsett

Coordinator
Saskia von Fahland

Nursery Officer
Davina Wain

Project Officer
Morgan Thomas

Call us for information:

- ◇ Weed management
- ◇ Plant identification
- ◇ Land management
- ◇ FREE property visits
- ◇ Land for Wildlife

Volunteer opportunities:
SLCMA Community Volunteer
Program, Wednesday 9-12
noon—**please register
prior, to attend.**

Native plants available
for purchase \$3 each.

SLCMA Executive 19/20

Chair: Mark Evans

Vice-chair: Karen May

Treasurer: Kevin Plumb

Secretary: Shirley Sidey

Executive members:

Sandy Evans
Lachlan McBride



SLCMA News!

Friendly reminder that membership renewals are now due. The membership fee remains at \$10 per person annually, with all of the great benefits. You are welcome to pay by internet banking, credit card or cash. Contact us, to workout the best option for you.



SLCMA Office — is now open for visitors. Please see below, for guidelines for all visitors (& volunteers). You are also welcome to contact us via phone or email and we will be happy to assist any Landcare enquiries.

SLCMA Community Volunteer Program — We are excited to be able to have started up our volunteer program, from Wednesday 15 July, 9am to 12noon. In order to adhere to current restrictions, the number of volunteers are **limited to 10**. Please ensure you call us before Wednesday **to book a spot**. We will provide tea, coffee, milk but to ensure your safety, please bring your own morning tea.

VISITORS AND VOLUNTEERS — To ensure that all visitors, volunteers and staff stay as safe as possible. Please be aware of the following procedures when visiting the SLCMA Office and SLCMA Community Nursery.

- ◆ Please do NOT visit if you are feeling unwell, have recently travelled to known hotspots or have been in contact with someone who has had the COVID-19 virus.
- ◆ If you have a Landcare enquiry that you think can be discussed/solved over the phone then please give us a call. If needed, we will be happy to organise an appointment.
- ◆ All visitors must:
 - ◆ Complete the sign-in/out register
 - ◆ Maintain social distancing (minimum 1.5m spacing)
 - ◆ Utilise hand sanitiser supplied upon entry & exit to the office or nursery

Plane Creek Revegetation Site— Sign Re-vamp!

On Tuesday 18th of August 2020, our Revegetation Team Leading Hand, Alana and Project Officer, Morgan worked with the Mackay Regional Council Vegetation Team, to re-install the information sign along the new walking track, at the Plane Creek Revegetation Site (Brewers Park Reserve). The sign details a few key native plant species that you can find along the walking track and the history of the site (*which dates all the way back to 1995*). Work still continues today, by both SLCMA and MRC, to maintain the site and ensure its longevity.

The sign sustained some damage during Cyclone Debbie in 2017 and need to be moved during the construction of the new walking trail. This was an opportunity to make some repairs and find a new spot next to the trail.

An enormous thank you to our volunteers **Peter Whitehead** who cleaned the sign for us, and **Neil Lavery** who repaired, strengthened and helped waterproofed the sign. We really could not have done it without their help and support.

Keep an eye out next time you head down!



L-R: Morgan and Alana with our sign

Weed Feature —Sicklepod

Sicklepod (*Senna obtusifolia*) is a very competitive, vigorous weed, thought to be native to America. It causes significant environmental and economic damage invading pastures, croplands, roadsides and natural areas. It prefers well drained, fertile soils across the east coast of Queensland (from Sarina to the tip of Cape York).

The plant is a vigorously growing, annual or short-lived perennial sub-shrub to 2m. Although regarded as an annual, plants will readily reshoot after slashing or if they survive chemical treatment. Flowers are small and yellow, consisting of 5 petals. The seed pod of the plant is slender and sickle-shaped (hence their name). Young stems of the plant have short hairs and when crushed, the leaves will produce a distinctive foetid smell. **Sicklepod is most easily identifiable by the leaves, which are divided into three opposite pairs (6 total) about 4cm long, 2cm wide and rounded at the end.**

Sicklepod form dense stands, quickly, which can completely dominate pastures, creekbanks, roadsides and other disturbed areas. Seeds of the plant can remain viable for up to 10 years in the soil and can germinate at any time of the year under favourable conditions. Typically, seeds are spread by cattle and horses, who typically find sicklepod unpalatable, but will eat the mature seed and therefore pass it through. The seed will then germinate in the dung and continue to grow and spread without human interference. **Most shockingly, sicklepod roots exude compounds which reduce the growth of nearby seedlings of other species, therefore immediate removal is recommended.**

The most important aim in the management of sicklepod is to prevent further seed production and ensure adequate groundcover of desirable plants eg. pasture, cover crop or native plants within natural areas. By removing plants before they seed, removing seed heads before viability, and spot-spraying and seedlings, landholders should be able to reduce the size of sicklepod infestations.

There are three sicklepods (Sicklepod *Senna obtusifolia*, Foetid senna *S. tora*, Hairy senna *S. hirsute*) all of which are **restricted invasive plants under the Biosecurity Act 2014**. They must not be given away, sold, or released into the environment without a permit. The Act requires everyone to take all reasonable and practical steps to minimise the risks associated with invasive plants and animals under their control. This is called a general biosecurity obligation (GBO). Click [here](#) for more information about Sicklepod or visit www.biosecurity.qld.gov.au

FREE land management help for landholders — GET IN QUICK!

Help us spread the word about the two FREE projects SLCMA currently has running, which we are actively seeking participants for (only have a few spots left for each). Tell your friends, family and neighbours!

Firstly: Our Riparian Rehabilitation Project aims to assist with the rehabilitation of a waterway/ creek/drainage channel etc. on your property to help strengthen the native riparian vegetation, prevent erosion &/or restore natural habitat. The waterways can be any size, shape or capacity. Seasonal creeks also qualify.

Through the project, landholders involved receive for FREE:

- **A site visit** from our Project Officer to assess the waterway and to understand your goals.
- **Land management and technical advice** relating to rehabilitation of riparian areas and erosion.
- **A personalised Land Management Action Plan** to provide further information relative to your property, goals and priorities.
- A **land management information pack** with relevant land management resources.
- **40 FREE local native plants and 40 FREE plant guard kits** to assist in the rehabilitation of the waterway/creek/drainage channel on your property.

Only two spaces remain in this project, so get in quick! *This project is supported by Queensland Government's Community Sustainability Action Grant Program.*

Secondly: The **Land for Wildlife** program (also **FREE**) aims to support and recognise landholders who integrate wildlife conservation with their land management activities. Plenty of rare/threatened species occur on private land and therefore their survival depends on landholders protecting important ecosystems.

Through the project, landholders involved receive for FREE:

- **A site visit** from our Project Officer, to identify the plant species; habitat and natural values of your property and to identify and discuss your property goals
- **A personalised Land Management Plan** to provide further information relative to your goals.
- **20 FREE native plants each year (not a typo, EACH year!)**
- Access to **FREE workshops, field days, closed facebook group, Quarterly newsletters** and opportunities to meet other like-minded landholders; as well as ongoing support and advice.
- Lastly, you will receive a **FREE Land for Wildlife sign** for your property to acknowledge your efforts in wildlife conservation.

Please call the SLCMA office (4956 1388) or email admin@sarinalandcare.org.au to express interest and to check your eligibility. *The Land for Wildlife Program is supported by Mackay Regional Council Natural Environment Levy.*



Above: Sicklepod with distinguishing 3 pairs of leaflets
Below: Sicklepod 'sickle-shaped' seed in development



Images: S & A Pearson

SLCMA Community Volunteer Program

Welcome back to our volunteers who have braved the cold weather to come in on our Wednesday volunteer mornings. We have lots to catch up on, with nursery plants to propagate and pot-on, fertilising and weeding to be done and for those who like washing up, there are plenty of pots to clean!

During our second week back, we had a chance to head out into our beautiful Sarina Community Gardens to search for seeds. We were able to collect seed from Sim's Wattle (*Acacia simsii*) and Boobialla (*Myoporum accuminatum*). We are hoping to soon see the fruit of our Sandpaper fig (*Ficus opposita*) ripen enough for collection too. A big thank you to those who continue to bring us in fresh seeds, it is greatly appreciated and please keep it up. Please remember to ensure the seed is labelled.



Images: S von Fahland

Above: Volunteers taking a break at the end of the bush track
Below: Volunteers on the search for seed

We also ventured out on a seed collecting trip to Grasstree beach on the 12th of August in search for a few more seeds to add to our collection. We were lucky enough to have 12 volunteers join us for the trip where we were able to explore bush tracks and coastal scrub and find seed from Coastal banksia (*Banksia integrifolia*) and Red ash (*Alphitonia excelsa*). Thank you to all those that joined in the fun and helped, and please keep an eye out for the advertisement of our next seed collection trip. There are plenty more seed to be collected!



The SLCMA Community Volunteer Program is proudly supported by Mackay Regional Council, Natural Environment Levy. For more details contact SLCMA on 4956 1388.



Thank you to our volunteers; Peter, Mick and Neil for their innovation, skills and enthusiasm to improve the plumbing into our self-watering rain garden.

We look forward to sharing the produce with all of our volunteers, soon.



Our latest addition: SLCMA Community Nursery Solar Panels

If you haven't been into the office or been part of our community volunteer program, you might not be aware but we have another addition to our community nursery!

Many thanks to **Sarina Community Bendigo Bank Branch** for the funding that we received through their community grant program to install solar panels at the SLCMA Community Nursery. This addition will greatly contribute to the improvement and efficiency of our nursery, as well the utilisation of a renewable energy. We are incredibly thankful to have received this funding and be able to finally increase our sustainability. The solar panels will help to power our irrigation system and other electrical equipment we utilise in the nursery.

A huge thank you to Energy Base & Newport Electrical for their assistance in the project.



Image: K. Thomsett



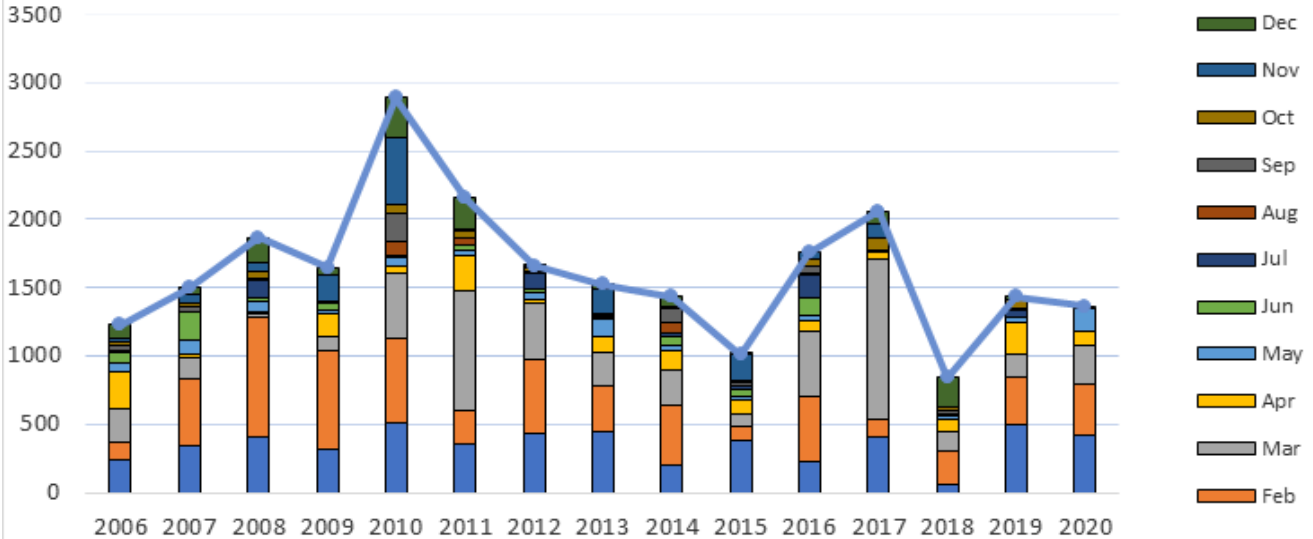
Office: 101 Sarina Beach Rd
 Postal: PO Box 682
 Sarina QLD 4737
 Phone: (07) 4956 1388
www.sarinalandcare.org.au
 Email: admin@sarinalandcare.org.au

What SLCMA Membership does for you !

A membership with SLCMA has many rewards:

- ◇ Easy access to Natural Resource Management information and extension
- ◇ Monthly newsletter, meeting minutes, progress and project reports
- ◇ A vote on issues in your catchment
- ◇ A say in the types of projects applied for
- ◇ Up to 10 free local native seedlings/year from the SLCMA Community Nursery
- ◇ Invitations to Natural Resource Management field days and workshops
- ◇ Copy of the SLCMA Annual Report

Monthly rainfall for SLCMA Office, 2006 -2020 (inc annual total)



Just for fun!

I told my friend that he really shouldn't be using a straw and he replied, "Yeah, I know, I know, it's bad for the environment." I said, "Sure, there's that but its just a really weird way of eating spaghetti..."

What did the big flower say to the little flower?
 What's up, bud?!

Why was the gardener so embarrassed?
 He wet his plants!

Where do flowers recharge?
 At a power plant!



Find us on [facebook](#)



Central QLD Coast
Landcare
 Network

A partnership for the natural resource management of catchments in the Central Queensland Coast Bioregion: Pioneer, Sarina & Whitsunday Catchments.

Containers for Change

SLCMA has registered with Containers for Change for virtual donations and we are hoping that you will consider using our identifier code — **C10002138**. We also welcome physical donations of eligible containers to our office, feel free to contact us on 4956 1388, to arrange drop-off. Thankyou to those who have donated your containers, so far we have raised **\$117.30** —Thankyou :)



SLCMA is proudly supported by:



Proudly Printed By

MICHELLE LANDRY MP
 Federal Member for Capricornia

If you have any issues, don't hesitate to contact my office

Shop 8, Sarina Beach Road Shopping Centre, Sarina 4743
 (07) 4943 2722 www.MichelleLandry.com.au
michelle.landry.mp@aph.gov.au [MichelleLandryMP](#)
 Authorised by M. Landry, 159 Denison Street, Rockhampton QLD 4700