

Annual Report 2018/19



September 2019

Chairperson's Annual Report



Mark Evans, Chairperson

This has been my first year on the Management Committee for SLCMA so it has been a time of learning and processing information, procedures, limitations and goals. I think all the committee members are either new to the role or have not been in it for some time. We have, I believe, functioned smoothly together, been supportive of and encouraged each other in working to achieve the desired outcomes for SLCMA.

I wish to thank the various committee members whose time is ending for their support and commitment over the past year. I wish to thank especially Jeff who was our Treasurer but was forced to resign through ill health. I also wish to thank the staff, particularly Saskia and Kristy for their willingness to go above and beyond. I have to say it has been a pleasure working with you both.

I also wish to thank all the volunteers who contribute so much to the success of this body and whose efforts in the nursery make much of it possible.

Then there are our thanks to all the project partners and funding providers who continue to support our organisation, so we can deliver Landcare projects and programs within the Sarina Catchment. These include Mackay Regional Council, Sarina Community Branch Bank, Reef Catchments, Dalrymple Bay Coal Terminal Pty Ltd, Dalrymple Bay Coal Terminal Management and Aurizon.

Through these opportunities we have been able to provide:

- ◆ Land management assistance to landholders including feral pig control
- ◆ Support to local schools and youth groups such as Sarina Scouts
- ◆ Native plants for local rehabilitation projects
- ◆ Displays at community events
- ◆ Facilitation of awareness raising events such as the Native Bee workshop and field trip to Materials Recovery Facility.
- ◆ Opportunities for community volunteers to be involved in on ground activities including rubbish clean ups and nursery activities.
- ◆ Representation on regional working groups including the Mackay Regional Pest Management Group, Central QLD Coast Landcare Network, Reef Guardian Network, Plane Creek Farmers Action Group and Mackay Whitsunday Isaac Wetland Working Group

Finally thank you to the members gathered and who elected us last year. May you show great wisdom as you elect those to serve in the year ahead.

Mark Evans, Chair.

Left: Native plants for Sarina State High School students planting project (Sarina Community Branch Bank Project)

Right: Cherry Tree Creek Revegetation (NDRAA Project)



<i>Inside this issue:</i>	
Chairperson's Annual Report	1
Coordinator Report	2
18/19 Management committee members & staff	2
SLCMA: • Organisational objectives • Vision and Goals	3
30 years of Landcare	3,4
Membership: Benefits and 18/19	5
Communication & publications	5
SLCMA Community Nursery	6
Program/ project updates	6-8
Supporting Local Schools	9
Working Groups Supported	9
Supporting Community Events	9



Coordinator's Report

Are you sure the 18/19 year is done & dusted? The year has flown by!

A highlight for this year was celebrating 30 years of Landcare across Australia. While SLCMA has been in operation for a smaller portion of this time (18 years) we are proud to be a part of the Landcare movement and that we are able to continue working on Landcare projects within our local community.

As you will see as you have a read of this report, we have achieved quite a lot this year. This has only been possible by working as a team and with the support of our Management Committee and other volunteers. I can definitely see some exciting events, projects and partnerships continue to build into in the coming year.

A huge thankyou to our team of staff and volunteers throughout the year:

- ◆ Management Committee members ~ for volunteering your time, skills and experience in helping to keep SLCMA moving forward
- ◆ Administration Officer, Kristy Thomsett ~ for your enthusiasm, ideas and keeping us on track and the SLCMA Office and financials in tip top shape
- ◆ Our Revegetation team, Adam Eaton, Taleah Webb, Peter Whitehead, Winka von Fahland and Calvin Dodd ~ who battled through some pretty warm days to finish planting on some of our projects and then did a great job keeping the sites maintained;
- ◆ Volunteer, Peter Whitehead ~ who works tirelessly, with pride and a smile in the Sarina Community Native Gardens, thankyou - they are looking great.
- ◆ Nursery Volunteers ~ Thankyou all for coming along to our volunteer mornings and helping out in the nursery, collecting seed and for your smiles, stories and great morning teas.



Saskia von Fahland,
Coordinator

I am looking forward to the coming year ahead.

Saskia von Fahland, Coordinator.

2018/19 Management Committee Members and Staff

Management Committee Members:

Chair Mark Evans
Vice Chair Karen May
Treasurer Jeff Burt
Secretary Grace Tipping
Management Committee Members
Sandra Evans
Lachlan McBride

Staff:

Coordinator Saskia von Fahland (*part-time*)
Administration Officer Kristy Thomsett (*part-time*)
Project Officer Adam Eaton (*to 30 June 2019*) (*part-time*)
Revegetation Officers (casual) Peter Whitehead, Winka von Fahland, Calvin Dodd, Taleah Webb

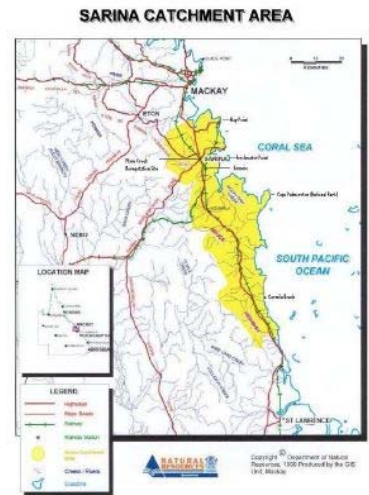


L-R: Lachlan McBride, Jeff Burt, Mark Evans, Grace Tipping, Sandy Evans, Karen May, Saskia von Fahland, Adam Eaton and Kristy Thomsett

Organisational Objectives

The objectives of Sarina Landcare Catchment Management Association Inc. are:

- a. To promote a strategic and integrated approach to natural resource management and biodiversity conservation in the Sarina Catchment area.
- b. To foster coordination and cooperation between land managers, community groups, industry and government agencies in their natural resource management activities.
- c. To promote understanding and awareness of the interactions and relationships between the natural systems and resources of the catchment.
- d. To identify and prioritise natural resource management issues within the Sarina Catchment Area.
- e. To prepare, coordinate and implement priority action plans identified in the Sarina ICM Strategy.
- f. To promote sustainable solutions and actions through strong community, industry and government partnerships in catchment management strategies.
- g. To provide a forum for community and government discussion on natural resource and catchment management issues.



SLCMA's Vision and Goals

Vision for the Sarina Catchment

The Sarina Catchment Area is an economically viable region, which is ecologically sustainable and well regarded as a healthy place to live and work

Goals

- Land Use Planning:** The land resources of the Catchment are managed in an ecologically sustainable manner.
- Land Management:** The most appropriate ecologically and economically sustainable land management practices are adopted throughout the catchment.
- River/Creek Management:** The creek systems are managed in such a way as to enhance and maintain their natural values while providing for the needs of the catchment community.
- Water Management:** The integrity of the natural systems within the catchment are enhanced and maintained while providing water of a suitable quality and quantity to meet the needs of the community.
- Coastal Management:** Management of the coastal area in a way that will ensure the sustainable use of the natural resources
- Vegetation/Biodiversity:** The native vegetation and biodiversity values of the catchment are enhanced and maintained and the natural systems are not further degraded.
- Community Awareness and Involvement:** A community that is aware of the need to maintain and improve the natural resources of the catchment and is actively involved in doing so.

SLCMA celebrates 30 years of Landcare across Australia

SLCMA was proud to be part of the celebrations during Landcare Week (2-8 September 2019) to acknowledge **30 years of Landcare** across Australia. To help celebrate, SLCMA hosted a **guided walk** including seed collecting and plant identification at one of our earlier project sites, the **Sarina Inlet Trail**.

*The **Sarina Inlet Trail** was built in 2005 by one of SLCMA's Sarina Green Corp teams in close collaboration with Sarina Beach Progress Association and local Council. The project included construction (by hand) of the 400m walking track and installation of interpretative signage, funded by Coastcare and Hanson.*

Volunteers and community members who attended enjoyed the Walk & Talk and celebration of Landcare.



Thirty years of Caring for Our Country: The Landcare Story

On a bright July morning in 1989, the late Bob Hawke sowed the seeds of a grassroots movement that has since flourished into a symbol of national pride. Standing on the banks of the Murray River, the then Prime Minister launched Landcare as a national movement, born from a collaborative approach towards sustainable agriculture and natural resource management. Thirty years later, Landcare has become the biggest environmental management movement in the country, now boasting over 6000 community groups and hundreds of thousands of dedicated volunteers. However, the principle of partnership between community, agriculture and conservation was harnessed many years before Bob Hawke's iconic Statement of the Environment.

As far back as the 1950s, many Australian communities had already practiced this collaborative grassroots approach to confronting environmental issues. Concentrating on soil conservation, salinity control programs and rural tree decline, pioneering groups like Warrenbayne-Boho Land Protection Group were established in the 1970s. Fast forward to the early eighties, the emergence of land conservation district committees grew legs after a significant dust storm suffocated the city of Melbourne in 1983, following years of incremental crippling drought.

The term 'Landcare' was officially coined in 1986 in Victoria when the late Joan Kirner, then Minister for Conservation, Forests and Lands, and Heather Mitchell, then president of the Victorian Farmers Federation, joined forces after being inspired by the influential works, such as those at Warrenbayne-Boho. "I think the kind of miracles in halting land degradation are being created by the community and that is what Warrenbayne-Boho are all about," Ms Kirner said at the time.

The momentous collaboration saw a group of farmers at Winjallock near St Arnaud in North Central Victoria, form the first Landcare groups. For these trailblazer Landcarers, it made sense to work together to tackle their shared environmental problems. By 1989, having seen the growth and success of Landcare in Victoria, a successful partnership between Rick Farley of the National Farmers' Federation and Phillip Toyne of the Australian Conservation Society proved an alliance between agriculture and environment could be successful.

"It might have been an irresistible political alliance but it was such an unlikely one - radical greenies and conservative farmers," Mr Toyne said during his address at the Rick Farley Memorial Lecture in 2006. It was enough to convince Bob Hawke, and on that July morning in 1989, during his Wentworth address, he launched the National Landcare initiative, committing \$320 million to the program. Prime Minister Hawke also declared the 1990s as 'the Decade of Landcare'. Landcare Australia was formed in October 1989 and was designed as a conduit between community, government and the corporate sector.

Motivated by a 'bottom-up' philosophy, Landcare groups emerged across Australia with the common objective to tackle local environmental issues by working together and creating positive change in their community. Unique to any other community movement, are the partnerships created between the Australian government, state and territory governments, local councils, research organisations, farming groups, business and industry, natural resource management agencies and community stakeholders.

Over the 30 years, Landcare peak bodies have been established in each state and territory including the formation of the National Landcare Network. From Landcare groups and Landcare farmers, the movement has evolved to now involve Coastcare, Rivercare, Dunecare, Bushcare, 'Friends of', Urban Landcare, Indigenous land management, Junior Landcare (including early learning childhood centres, schools, Scouts, Girl Guides and youth groups) and other community groups involved in restoring and protecting their local environment.

"When National Landcare was first started back in 1989, they were hoping to achieve about 2000 groups around the country," Landcare Australia chief executive officer Dr Shane Norrish said. "Now there are more than 6000 with hundreds of thousands of volunteers. It has surpassed all expectation." As the movement celebrates 30 years of national Landcare, it honours its greatest asset - its people. From retirees to families, surfers to farmers and business people to students, it is the passion of these people, mostly volunteers, that is the driving success behind Landcare.

"The majority of Landcare groups draw on their volunteers, their motivation and enthusiasm," Dr Norrish said.

"Landcare is an incredible social movement. As it continues to evolve and expand, so too will the strong sense of wellbeing and community it brings to preserve and protect the unique Australian landscape." - Landcare Australia chief executive officer Dr Shane Norrish



SLCMA Membership benefits!



A membership with SLCMA has many rewards:

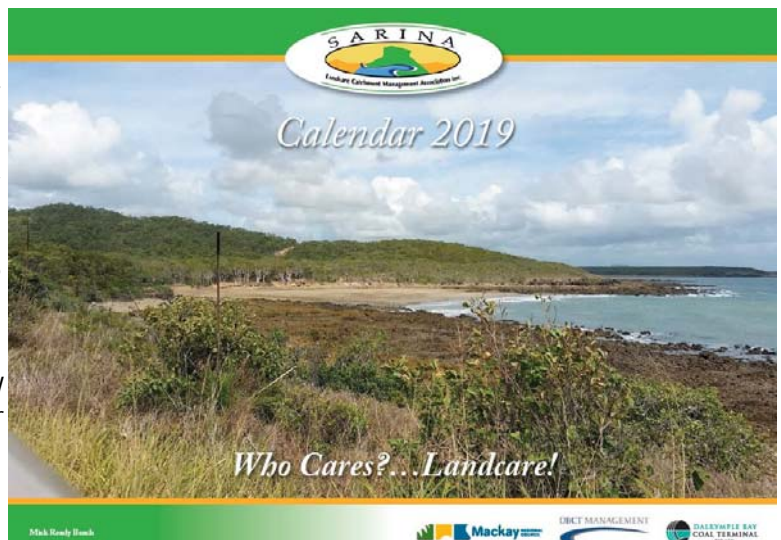
- ◇ Easy access to Natural Resource Management information and extension
- ◇ Monthly newsletter, meeting minutes, progress and project reports
- ◇ A vote on issues in your catchment
- ◇ A say in the types of projects applied for
- ◇ Up to 10 free local native seedlings from the SLCMA Community Nursery each year
- ◇ Invitations to Natural Resource Management bus tours, field days and workshops

SLCMA Membership 2018/19

Class of Membership	Is membership of the class to be limited or unlimited in number?	If the class of membership is to be limited in number, how?	Limitations relating to the class of membership	Entry requirements for class of membership	Number of members
Government Organisation Member	Unlimited	N/A	1. Full voting rights	Open to nominated Councilors of local authorities within the Association's catchment area, and nominated officers of State Government departments or authorities, or divisions or branches within them.	15
Associate Member	Unlimited	N/A	1. Full voting rights	Shall be opened to nominees of: Companies and Cooperatives carrying out activities within the Catchment area. Local organizations and institutions. Local groups with a direct interest in land use	40
Ordinary Landcare Member	Unlimited	N/A	1. Open to any adult owners or occupiers of land 2. Full voting rights	1. Must be over 18 years of age 2. Annual fee for membership, the amount to be decided at an annual general meeting	105
Junior Member	Limited	There are to be no more than 50 Junior members at any time	1. May not vote 2. Not eligible for election to management committee positions	1. Must be under 18 years of age 2. Must be a registered Junior Landcare member.	13

Communication & publications

- **SLCMA Catchment News** is distributed monthly to approximately 300 recipients. The newsletter is a great way for members to keep up-to-date with available funding, workshops, field days, volunteer opportunities and the latest in natural resource management news.
- **SLCMA website and facebook page** are a great way for the community and members to keep up-to-date with what is happening in our catchment.
- **SLCMA Calendar 2019** was well received by members, schools and volunteers. It is a great opportunity to showcase places of interest and critters from around the catchment. It is also includes important dates such as meetings, environmental awareness events and cattle sales. *Thankyou to Mackay Regional Council, Dalrymple Bay Coal Terminal PTY LTD and Dalrymple Bay Coal Terminal Management for their contribution towards the printing costs.*



SLCMA Community Nursery

The SLCMA Community Nursery was built in 2003 by SLCMA volunteers and the Sarina Green Corps team. It is utilised as a training facility for the community and a base for the SLCMA Community Volunteer Program; to learn about native plants, plant propagation and general nursery practices. It also allows for the propagation of local native plants for local and regional rehabilitation projects, community projects, gardens and landscaping. The facility also includes a water treatment train, which was constructed in 2017.

With the assistance of our volunteers, we have distributed over 4200 native plants throughout the year. This has provided plants to our Landcare Members plant allocations (up to 10 free native plants per member per year), Land for Wildlife program and projects such as DBCTPL, Natural Disaster Recovery rehabilitation of Cherry Tree, Marion and Westhill Creeks and Plane Creek Revegetation Site. We also continue to sell plants to the community, with the funds raised, put back in, to support the running costs of the nursery.

We continue to seek as many new local species to propagate and further diversify our species list. Our aim is to keep increasing our species availability and to keep supplying demand for quality, locally adapted plants. Thankyou to the Landholders who have given us permission to collect seed on their property and to some of you who have brought seed in throughout the year.

The facility also includes a demonstration “Water Treatment Train” which is used as an educational tool year to demonstrate how wetlands (both constructed and natural) can be used to ‘treat’ water. The “Water Treatment Train” was installed in 2017 in collaboration with Department of Agriculture and Fisheries (DAF). It consists of 4 connected chambers with local native water plants and educational signage.

A big thankyou to our volunteers who assist staff on a weekly basis to keep our seedbank full and tend to the plants in the nursery.

We have had many visitors to the nursery throughout the year all of whom have provided positive feedback about the facility and are impressed with the opportunities it provides for the Sarina community, both socially and environmentally.

Program & project updates: SLCMA Community Volunteer Program

The SLCMA Community Volunteer Program is now in its 16th year. A big thankyou to all our volunteers past and present. This year we have welcomed a few new volunteers and continued to enjoy the company of our long-standing volunteers. A big thankyou to our volunteer team who have continued their dedication, coming along every Wednesday, 9am—12noon.

The volunteers mainly operate in the SLCMA Community Nursery undertaking cleaning and sowing seeds, potting up seedlings and of course, weeding. They have also been on a number of plant identification and seed collecting trips around the catchment including Plane Creek, Grasstree, Sarina and Hay Point Beaches.

A particular highlight for the year was attending the field trip to the Materials Recovery Facility, during National Recycling Week. Everyone who attended the event, enjoyed the opportunity to see first hand, the process of sorting and recycling waste from our yellow-lidded recycling bins. It was an eye opener seeing the combination of high tech equipment as well as manual labour to separate out the various recyclable materials.

The volunteer program have also contributed to our sustainable food garden throughout the year—providing herbs and other edible plants. It continues to be a great opportunity for volunteers to meet new people and learn about native plants and their propagation. The SLCMA Community Volunteer Program receives much appreciated support from the Mackay Regional Council, Natural Environment Levy.



Sarina Community Native Gardens

In 2009 we began the journey of transforming an area of lawn adjacent to the SLCMA Office, into the Sarina Community Native Gardens. The purpose of the gardens is to demonstrate and promote the use of native plant in gardens and landscaping situations as well as provide an educational opportunity for locals & visitors to learn about local native plants, their benefits & uses in various situations.

The changes over the last nine years have been amazing with many of the plants now flowering, seeding and providing habitat for a variety of native birds and wildlife. Over the time, we have achieved many milestones including the installation and extension of a seasonal wetland, walking track, boardwalk and themed gardens including the sensory gardens and local habitats. A highlight was the official opening in 2013 by gardening guru, Costa Georgiadis.

A big thankyou to Peter, our volunteer who dedicates his time to the gardens, keeping on top of the weeds in the wet season and keeping the plants alive during the dry, with lots of pruning, mulching and weeding. We also had the opportunity to give our boardwalk and stepping stones a freshen with some paint donated from Mackay Regional Council (thankyou).



We have had a few visitors to the gardens this year including members, volunteers and a friendly frilled, members of the Sarina Scouts Club and a friendly frilled neck lizard! We look forward to the possibilities and opportunities to develop the gardens further into the future and utilise it to its full potential.



Land for Wildlife Program

The Land for Wildlife program is a voluntary program that recognises landholders who are making a significant effort to encourage and provide habitat for wildlife on their properties. This is achieved by conserving and actively managing habitat as well as integrating nature conservation with other land uses such as agriculture, grazing or tourism.



This year we have welcomed new members to the program and supported existing members through property visits. Landholders participating in the program, receive a number of benefits including; 20 free native plants per year, land management advice and links to resources, re-visits to registered properties, invitations to field days and workshops, quarterly regional newsletter and opportunity to communicate with other members of the LfW program via a 'closed' facebook page.

Land for Wildlife participants enjoyed a guided walk through De Moleyns Lagoon for the annual field trip. The field trip was a great opportunity to find out about the lagoon, the rehabilitation process so far, as well as see first-hand a variety local bird species utilising the lagoon and surrounding vegetation.



The Land for Wildlife program is delivered within the Mackay Regional Council boundaries of the Sarina Catchment by SLCMA and the Pioneer Catchment by Pioneer Catchment and Landcare Group (PCL); on behalf of the Mackay Regional Council Natural Environment Program. This coordinated approach provides consistency across the region and beneficial linkages to other complimentary projects and programs.

Coordinated Feral Pig Control Program

SLCMA delivers the Coordinated Feral Pig Control Program across the Rocky Dam and Carmila Creek Catchments which is co-funded by Reef Catchments and private landholders. The success of the program is attributed to a coordinated approach with landholders and stakeholders including Plane Creek Productivity Services, Council, Mackay Regional Pest Management Group, Department of Agriculture & Fisheries. It also compliments and aligns with other similar control programs across the wider Mackay Whitsunday region.

The program engages with over 50 landholders across a range of landuses (cane, grazing & horticulture), who participate voluntarily in one or more of the control methods, at different times of the year and at varying levels. The different control methods include trapping (available for loan from SLCMA), baiting (with Council) and an annual aerial control event. The annual aerial control event was held in December 2018 with a follow up event in February 2019. Over the two events 127 feral pigs were controlled. This year we joined with the Plane Creek Farmers Action Group to help connect with local farmers in the program.



It is great that landholders are working together and recognise that a pig controlled a few kms away is still of benefit to them and their property. The coordinated approach allows for a large area of the catchment to be covered in a short space of time, increasing the potential to reduce feral pig numbers and hence reduce negative impacts on farming land and natural areas.

Riparian Rehabilitation after Cyclone Debbie

This three year project seeks to address damage to riparian areas within the Sarina Catchment, in particular areas affected by Cyclone Debbie in March 2017. The project aims to improve:

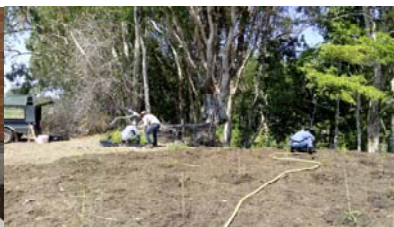
- ◆ The health of riparian areas and build resilience within the landscape
- ◆ Community awareness of the importance of riparian areas including habitat value, role in streambank health and water quality
- ◆ Community and landholder participation in rehabilitation activities along local creeks
- ◆ Landholder knowledge and capacity to protect and restore riparian areas

To date the project has included include SLCMA working alongside Mackay Regional Council and volunteers to undertake rehabilitation activities including Madeira vine control and community working bees at the Plane Creek Revegetation Site. The project site and associated works will be utilised to demonstrate the 'importance of riparian zones and use of rehabilitation techniques'. The other aspect of the project will involve engaging with local landholders and providing land management advice and native plants to assist with the stabilisation of local creeks on private property. This project is funded through the Queensland Government - Community Sustainability Action Grants.



Other projects and grants

- **Sarina Landcare Support Project** funding from Mackay Regional Council—Natural Environment Program. This project supports SLCMA to provide ongoing services to landholders and the general community through activities such as the SLCMA Community Volunteer Program, environmental awareness events, displays at local events, working with stakeholders, coordination of projects and workshops, support for local schools.
- **Rehabilitation projects** at Dalrymple Bay Coal Terminal facility. Throughout the year, we have continued to maintain a number of rehabilitation sites with Dalrymple Bay Coal Terminal Pty Ltd. It is great to continue our involvement in the projects and be able to see plants grown in the SLCMA Community Nursery, go back into the local environment. It has also been a great opportunity to strengthen our partnership with DBCT staff; including delivering weed identification training to their environmental staff.
- **Raising awareness of Landcare within the Community** funded through Sarina Community Bank Branch Bendigo Bank Engagement Program. The project allowed us to design, purchase and install roadside signage to raise the profile of the Sarina Community Native Gardens and of SLCMA by defining the northern and southern boundaries of the Sarina Catchment area, in which we operate.
- **Marquee Program** funded through Sarina Community Bank Branch Bendigo Bank Engagement Program. This sponsorship allowed us to obtain a 3m x 3m marquee, pull up banner and table cloth. This will be well utilised by SLCMA at events and displays in our local community.
- **First aid training for staff & volunteers of SLCMA and PCL** funded through the Mackay Regional Council Community Grants Program. Ten staff and volunteers from SLCMA and Pioneer Catchment & Landcare Group (PCL) became First Aid certified through undertaking the "Provide First Aid" course (previously known as Senior First Aid).
- **New Quikshade cover & trolley**— funded through DBCT PL sponsorship program. A new cover for our large Quikshade and trolley. This will be well utilised by SLCMA at events and displays in our local community.
- **Climate Week event** —funded through the QLD Government via QLD Water and Landcarers. The event provided free native plant for the community and volunteer opportunities.
- **Riparian Revegetation projects**— funded by Reef Catchments through the Natural Disaster Relief and Recovery Program (NDRRA) funded by the Australian and Queensland Government. SLCMA's role in the project involved revegetation and maintenance of three rehabilitation sites, along Westhill, Marion and Cherry Tree Creeks. The SLCMA Revegetation team did a great job, planting over 3000 native plants sourced from the SLCMA Community Nursery and keeping the sites maintained until 30 June 2019.
- **NRM Review**—funded by Reef Catchments. SLCMA is working in partnership with Reef Catchments and the other Landcare groups to identify barriers, review projects and gain landholder feedback as part of the NRM review.



Supporting our local schools



SLCMA continues to provide support to our local schools, through the Landcare Support Project funded by Mackay Regional Council Natural Environment Program. This foundation funding provides SLCMA the capacity to support local schools for up to 5 days per year with support such as providing technical advice, delivering educational activities, assist teachers and students with resources and information and, seeking opportunities for additional funding for complimentary projects.

Working Groups supported

SLCMA is proud to support the following working groups:

- Central QLD Coast Landcare Network
- Mackay Whitsunday Regional Pest Management Group
- Rocky Dam Creek Coordinated Feral Pig Working Group
- Healthy Rivers to Reef Partnership
- Mackay Whitsunday Isaacs Wetland Working Group



Supporting Community Events

Displays: SLCMA was out & about with Landcare displays at a range of locations and events throughout the year including:

- Sarina Community Bendigo Bank for the month of July 2019
- Sarina & District Community Kindergarten Open Day
- Alligator Creek State School – Under 8's Day
- Homebush State School—Homebush Hoedown
- Sarina Cattle Sales

Events:

- **ReefBlitz** coastal clean up at Grasstree Beach (31 October 2018)
- **Native Bee Workshop** (12 April 2019)
- **Sarina Youth Activities**— Making seed bombs with Mackay Regional Council Library (April 2019)
- **Great Northern Clean Up** (31 August 2019): SLCMA supported Mackay Regional Council in the 'Great Northern Clean Up' by facilitating a community clean up event at Sarina Beach.
- **30 Years of Landcare celebration** (4 September 2019) Guided walk along Sarina Inlet Trail

SLCMA is supported by:



37 Broad Street, Sarina
Phone: 07 4943 2634

