

SLCMA Catchment News 2024



December

Office: 101 Sarina Beach Rd
Sarina, QLD, 4737

Phone: (07) 4956 1388

Website:
www.sarinalandcare.org.au

Email:
admin@sarinalandcare.org.au

Office hours:

Mon/Wed: 9am-4pm

Tue/Thu: 9am-2pm

Fri: 9am-3.30pm

Please phone ahead to confirm availability, just in case we are out on a project or meeting.

Staff

Coordinator

Saskia von Fahland

Administration Officer

Helen Dangerfield

Project Officer

Rodney Fraser

Nursery Officer/ Field Supervisor

Susie Tomlinson

Field Team Leader

Helen Lynch

Field Team

Chantelle Woods

Dominique Jooste

Adrian Brooks

Call us for information:

- ◇ Weed management
- ◇ Plant identification
- ◇ Land management
- ◇ Land for Wildlife

Volunteer opportunities:

SLCMA Community
Volunteer Program,
Wednesday, 9-12 noon.

Native plants available for purchase \$3.30 each. Visit [website](http://www.sarinalandcare.org.au) for latest plant order form.

SLCMA Executive 24/25

Chair: Lachlan McBride

Vice-chair: Malcolm Warfield

Treasurer: Susan Andrews

Secretary:

Karen May

Executive member:

Kath De Vita



Sarina
Landcare

SLCMA News!

Celebrating Rod's McFadzens' contributions to Landcare: We recently had the privilege of honouring long-term member and supporter, Rod McFadzen, with a Life Membership to SLCMA.

Rod has been an integral part of our organisation since 2001, initially serving as a representative of QLD Dairy Farmers Organisation and then as an Ordinary Landcare Member. Rod also made a significant impact on the SLCMA Management Committee, serving in a number of roles including Chairperson and executive member between 2004 to 2014. Rod's dedication to our mission continues to this day as a passionate member of Landcare.

We extend our heartfelt gratitude to Rod for his remarkable commitment and lasting contributions over the years.



Photo: R Fraser

Saskia von Fahland presenting certificate to Rod McFadzen

SLCMA 2025 Calendar
Coming January 2025

SLCMA Calendar 2025 is coming soon, keep a spot on your wall! We would like to thank Daly Bay, DBI and Mackay Regional Council for their support toward the printing of the calendar. Thank you also to those who sent through photos of our catchment—we are looking forward to sharing the end product with you in early 2025.

Did you know you can find out about what is happening nationally with Landcare through **Landcare in Focus**. Landcare in Focus is a biannual online magazine produced by Landcare Australia; that features case studies and science-based articles focused on innovation in agricultural land management, excellence in sustainable farming, revegetation and habitat restoration, protection of waterways, community participation in landcare projects including conservation and sustainable land management.

The latest edition of Landcare in Focus was published on 20 November and is available [here](#). You can also [subscribe here](#) to receive future editions.



SARINA
Landcare Catchment Management Association Inc.

Christmas

CLOSURE DATES

Thank you for all your support over the past year and we look forward to see you in 2025

CLOSED: 21st Dec - 5th Jan
REOPENING: 6th January 2025

On behalf of the SLCMA Management Committee and staff we would like to wish all our members, volunteers, project partners and supporters a very Merry and, a safe festive season and a prosperous New Year.

Thank you for all your support during 2024, we look forward to seeing you all in 2025.

SLCMA 'Plant of the Month'

This month's 'Plant of the Month' is: *Araucaria cunninghamii* (Hoop Pine)

Family: Araucariaceae

What is in a name? *Araucaria* comes from Arauco province in Chile where the related species *Araucaria araucana* was first discovered; *cunninghamii* is in honour of Alan Cunningham, 19th century botanist who collected the first documented hoop pine specimens. Hoop pine refers to the outer layer of bark which forms scale-like horizontal hoops.

Form & height: Symmetrical, cone-shaped tree to 60m.

Leaves: Branches are whorled and the linear, glossy green leaves are very fine and pointy, 100-150mm long.

Flowers & Fruit: Male and female cones are usually on the same tree, male cones forming a dense cluster of cylindrical spikes. Trees are usually 22-27 years old before producing male (pollen) cones, although early pollen cone production has been observed in 6 year old individuals. Female (seed) cones are round and occur near the top of the tree.

Habitat & distribution: Rainforests and rainforest edges along the east coast of Australia, from Macleay River NSW to Cape York, extending to PNG.

Notes: A large attractive, slow growing, long lived (up to 450 years) tree, giving grand look to any landscape. Timber is a pale yellow-brown colour with a fine texture and a straight grain making it useful for furniture, flooring, panelling and, in the past, match sticks and boxes. Food for cockatoos.

The "Plant of the Month" is currently available from the SLCMA Community Nursery. Landcare members are eligible to receive 1 free "Plant of the Month", throughout that month. This and other native plant species are also available for purchase at \$3.30 each. All plants are grown from locally sourced seed in the SLCMA Community Nursery by SLCMA staff and the SLCMA Volunteer team.

Information and photos sourced from: <https://www.anbg.gov.au/photos>, <https://sown.com.au/araucaria-cunninghamii-araucariaceae-hoop-pine/>



Photo: M Pegg, dig 30231

Form of hoop pine



Photo: R Fraser

Young hoop pine



Photo: unknown, rfk 456

Cones of hoop pine

SLCMA Community Nursery Volunteer Program

The nursery volunteers have been busy cleaning, cataloguing and either sowing or storing seeds collected during the recent seed collection trip to Carmila beach. We were fortunate to find a variety of seeds ready for harvest, including *Euroschinus falcatus* (Ribbonwood), *Cupaniopsis anacardioides* (Tuckeroo), *Mimusops elengi* (Red Condo) and *Alectryon conatus* (Hairy alectryon). These species will be grown for use in future revegetation projects and available for purchase from the nursery.



Photo: S Tomlinson

Volunteers busy in nursery before enjoying Christmas morning tea

The final SLCMA Community Volunteer morning for 2024 took place on December 11th, featuring a bit of nursery work, an indulgent morning tea, and a fun Secret Santa gift exchange. We are immensely grateful for our volunteers' continued support in seed collection, propagation, and various other nursery tasks. Their contributions have been invaluable to the success of the SLCMA Community Nursery.

Nursery volunteer mornings will resume in 2025 on January 15th. We look forward to welcoming everyone back for another productive year! **If you would like to volunteer in your local community and meet new people while learning local native plants and their propagation, come along to the SLCMA Community Volunteer morning, every Wednesday, 9am to 12noon.** For more details contact SLCMA on 4956 1388. SLCMA Community Volunteer Program is proudly supported by Mackay Regional Council, Natural Environment Levy.

Out with the old, in with the new!



Photo: S Tomlinson

Old sign, has had its day ;)

Check out our brand-new sign for the SLCMA Community Nursery — how great does it look?! A huge thank you to Community Bank Sarina Bendigo Bank for making this happen. Stay tuned for more exciting nursery upgrades and celebrations as we step into the new year. We can't wait to share it all with you!"



Photo: S Tomlinson

Susie & our volunteers very excited about the new sign

2024 reflection—A Year of Growth and Community Impact

2024 has been a remarkable year for Sarina Landcare, with incredible achievements made possible by the tireless efforts of our SLCMA team, our dedicated volunteers, and the broader community. Together, we've made significant strides in enhancing our local environment and fostering stronger connections within our community.



Photo: S. Fohlinson

SLCMA Community Nursery Our nursery has had a phenomenal year with Nursery Officer Susie at the helm leading the expansion and with assistance of our Landcare volunteers collecting, germinating and potting over 15,700 local native plants. These plants have played a crucial role in a variety of projects across the region, either purchased by community members or used by our field team in revegetation projects around the catchment.



Photo: H. Lynch

Field Team Accomplishments Our field team has been incredibly productive in 2024, making an impact on several key environmental projects. Notably, we planted 3,167 native plants as part of Reef Catchments' Sarina Koala Habitat Restoration Project, contributing to the protection of this iconic species and its habitat. In addition, 2,475 plants were planted under the Reef Assist Program towards for Riparian restoration - helping to improve local waterways and riparian ecosystems. Smaller, yet equally important projects saw 551 plants placed in the ground for other local initiatives, including: Sarina Hospital Medicinal Garden, Mackay Compost Bioremediation Basin, Sarina Inlet Trail Restoration and Hut Creek Bridge Erosion Control & Restoration.

Land for Wildlife and Gardens for Wildlife Programs Our environmental programs have also seen impressive growth. Six new properties joined the Land for Wildlife Program, demonstrating the increasing commitment of local landholders to conserve and protect native wildlife habitats. We partnered with Mackay Regional Council to bring the Gardens for Wildlife Program to local Sarina residents; by providing 1,078 plants to help residents create sustainable, wildlife-friendly gardens.

Community Engagement and Education Sarina Landcare continues to be a key player in fostering community engagement and environmental education. In 2024, we facilitated 17 workshops, educational days, and clean-up events, covering a wide range of topics relevant to both local environmental issues and community needs. We also worked closely with the Sarina Youth Centre, hosting four afternoons with young people, providing valuable learning opportunities and encouraging them to become stewards of the environment.

Traditional Owner partnerships and collaboration This year, we were fortunate to work alongside the YUWI Rangers and Koinjmal Peoples on several significant projects, strengthening our bonds with local Indigenous communities and expanding the scope of our restoration efforts. Some highlights include:

- Collaborative work on the Sarina Hospital Medicinal Garden project
- Participation in the Reef Clean Cape Palmerston Beach event
- Cape Hillsborough Restoration efforts
- Joining in the NAIDOC Parade, celebrating the culture and achievements of Aboriginal and Torres Strait Islander peoples.
- Facilitating community planting events during the St Lawrence Wetlands Weekend



Photo: Yuwi Rangers

We are immensely grateful for these partnerships, and we look forward to continuing this important collaboration in the years ahead.

Looking Ahead The success of 2024 is a testament to the passion, hard work, and community spirit that defines Sarina Landcare and our team of staff, volunteers and supporters. As we look forward to 2025, we remain committed to restoring and protecting the natural beauty of our region, empowering local communities, and supporting future generations of environmental stewards. We extend our deepest thanks to everyone who has contributed to making this year such a success and look forward to another year of growth, collaboration, and impact.

Join the Christmas Beetle count...

Help find out where all the Christmas beetles have gone! People report seeing fewer and fewer Christmas beetles recently. By contributing to this project you will be helping determine whether they are declining, and if so what might be causing that decline.

For more information here: <https://invertebratesaustralia.org/christmas-beetles>

To identify Christmas Beetles, get the Australian Museum's Xmas Beetle ID Guide app from the App Store or Google Play. For the best chance of an accurate ID, take photos – one of the back, one of the belly, one from the front of the face and one from the back, of the rear end!

And remember, when identifying Christmas beetles it's important to be on the lookout for imposters! Upload your photos and sightings to the iNaturalist project - <https://www.inaturalist.org/projects/christmas-beetle-count>

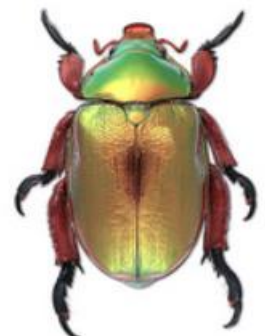


Photo: Australian Museum and Mike Burleigh



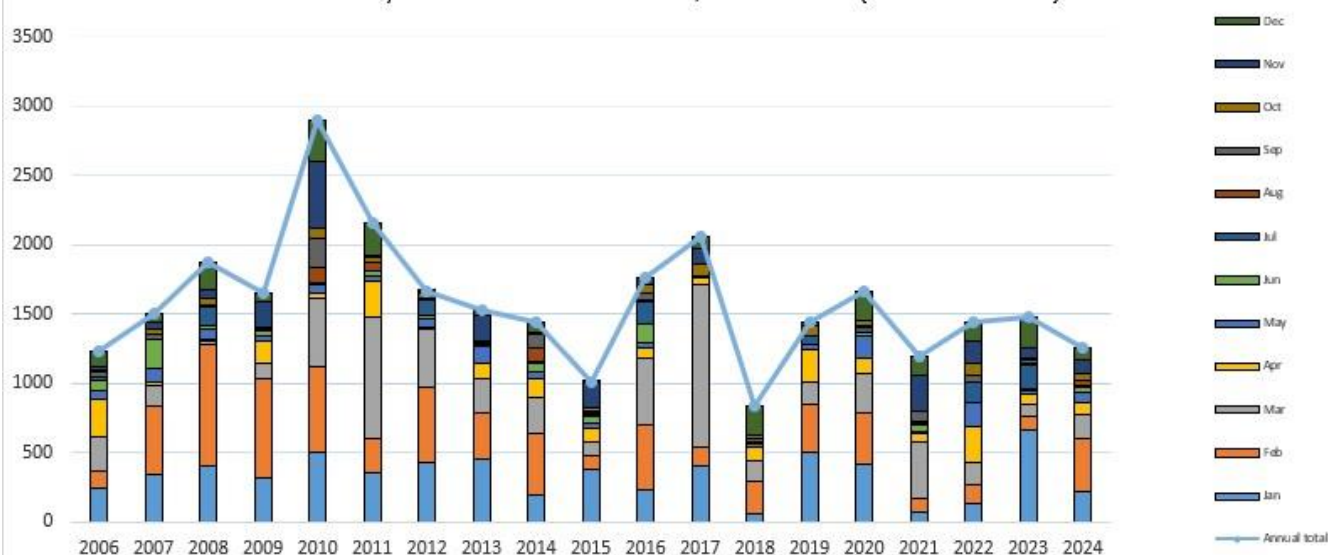
What SLCMA Membership does for you!

A membership with SLCMA has many rewards:

- ◇ Easy access to Natural Resource Management information and extension
- ◇ Monthly newsletter, meeting minutes, progress and project reports
- ◇ A vote on issues in your catchment
- ◇ A say in the types of projects applied for
- ◇ Up to 10 free local native seedlings/year from the SLCMA Community Nursery
- ◇ Invitations to Natural Resource Management field days and workshops
- ◇ Copy of the SLCMA Annual Report

Address: 101 Sarina Beach Rd, Sarina QLD 4737
Phone: (07) 4956 1388
Website: www.sarinalandcare.org.au
Email: admin@sarinalandcare.org.au

Monthly rainfall for SLCMA Office, 2006 -2024 (inc annual total)



Please consider donating your Containers for Change to SLCMA. You can quote SLCMA's Scheme ID#C10002138 when you deposit your eligible containers **or**, you can drop your containers to us. It is a great way to help the environment and the community. You can reduce waste, save energy, and contribute to local environment projects and programs.



SLCMA's Scheme ID
C10002138



A partnership for the natural resource management of catchments in the Central Queensland Coast Bioregion: Pioneer, Sarina & Whitsunday Catchments.

Just for fun!

- Q:** Why do plants hate math?
A: Because it gives them square roots!
- Q:** Why are trees so good at networking?
A: Because they're constantly branching out.
- Q:** Why do flowers always drive so fast?
A: Because they put the petal to the metal.



[Find us on facebook](#)



SLCMA is proudly supported by:

