

SLCMA Catchment News 2024



October/November

Office: 101 Sarina Beach Rd
Sarina, QLD, 4737

Phone: (07) 4956 1388

Website:
www.sarinalandcare.org.au

Email:
admin@sarinalandcare.org.au

Office hours:

Mon/Wed: 9am-4pm

Tue/Thu: 9am-2pm

Fri: 9am-3.30pm

Please phone ahead to confirm availability, just in case we are out on a project or meeting.

Staff

Coordinator

Saskia von Fahland

Administration Officer

Helen Dangerfield

Project Officer

Rodney Fraser

Nursery Officer/ Field Supervisor

Susie Tomlinson

Field Team Leader

Helen Lynch

Field Team

Chantelle Woods

Dominique Jooste

Adrian Brooks

Call us for information:

- ◇ Weed management
- ◇ Plant identification
- ◇ Land management
- ◇ Land for Wildlife

Volunteer opportunities:

SLCMA Community Volunteer Program, Wednesday, 9-12 noon.

Native plants available for purchase \$3.30 each. Visit [website](http://www.sarinalandcare.org.au) for latest plant order form.

SLCMA Executive 24/25

Chair: Lachlan McBride

Vice-chair: Malcolm Warfield

Treasurer: Susan Andrews

Secretary:
Karen May

Executive member:
Kath De Vita

Sarina News!

The **Annual General Meeting** was held on 16th November at the SLCMA Office. Thank you to our members, volunteers and staff who attended the meeting and helped to celebrate our achievements over the last 12 months.

Thank you to our outgoing committee members: Lachlan McBride (Chair), Karen May (Secretary), Susan Andrews (Treasurer) and Kath de Vita (Executive Member) for volunteering their time and sharing their skills and knowledge to support SLCMA.

We would like to thank the outgoing committee members for re-nominating and welcome new committee member Malcolm Warfield. Our 24/25 management committee members are:

Chair:	Lachlan McBride
Vice-chair:	Malcolm Warfield
Treasurer:	Susan Andrews
Secretary:	Karen May
Executive Member:	Kath de Vita
Executive Member:	vacant

A special mention to our Chair Lachlan McBride who has recently left the region, but will continue to support SLCMA over the next 12 months as Chair. As such we invite members to reach out to us if you are interested in learning about the SLCMA Management Committee and with a vision to step up onto committee into the future.



Photo: J Heaphy

SLCMA members, volunteers and staff enjoying the SLCMA Christmas party :)

The AGM was followed by the **SLCMA Christmas party** at the Sarina Bowls Club. This was a great celebration for members, volunteers and staff to enjoy a friendly game of barefoot bowls, along with some nibblies, drinks and great discussions. Thank you to those who joined us for both the AGM and Christmas party—it great to have you all involved! We are looking forward to another great year ahead.



Last call for photos!

We are currently putting together the **SLCMA Calendar** for 2025, if you would like us to consider including some of your photos of the Sarina area—please send them through asap, **by 30th November**.



SLCMA 'Plant of the Month'

This month's 'Plant of the Month' is: *Enchylaena tomentosa* (**Ruby Salt Bush**)

Family: Amaranthaceae

What is in a name? *Enchylaena*; From Greek *egchlos*, succulent and *chlaena*, a cloak, referring to the ripe fruiting perianth. *tomentosa*; botanical Latin, meaning covered with dense short curled or curved hairs, referring to leaves and branches.

Form: Groundcover to small shrub to 1m.

Leaves: Greyish foliage and stems, covered with short hairs. The linear leaves are rounded in cross section (terete), succulent, 6 to 15mm long.

Flower: Small white flowers occur Autumn to Spring.

Fruit: Very showy, small, 5mm, succulent fruits; depressed-globular in shape, change from green to yellow to red upon ripening, different colour stages commonly present at the one time.

Habitat: Occurs through most of semi-arid Australia, on a variety of land and soil types such as sand plains, hill slopes, creek lines, sand dunes and salt lake shores. Tolerates a range of soils, preferring slightly saline soils and shaded area under trees.

Distribution: Found over a wide range of poor soils from coastal, partially stabilised, dune sands near the Southern Ocean in South Australia, to riverine clay loams, often in saline depressions, and to the deep siliceous, sandy soils in many semi-arid regions of the continent. The species is recorded in salt marsh habitats in tropical, sub-tropical, and temperate regions.

Notes: Ruby Saltbush is a quaint succulent bearing small berries with a crisp, salty-sweet flavour. Berries may be eaten raw or soaked in water to make a sweet tea. The leaves are also edible, but as they're rich in oxalates, they should be cooked before eating, or consumed sparingly. The fruit can also be used to produce a red dye and have a black stone inside, also edible. The berries are a good source of vitamin C. Can also be used as fodder.

The "**Plant of the Month**" is currently available from the SLCMA Community Nursery. Landcare members are eligible to receive 1 free "Plant of the Month", throughout that month. This and other native plant species are also available for purchase at \$3.30 each. All plants are grown from locally sourced seed in the SLCMA Community Nursery by SLCMA staff and the SLCMA Volunteer team.

Information sourced from: <https://visit.museum.wa.gov.au/goldfields/ruby-saltbush>, https://anpsa.org.au/plant_profiles/enchylaena-tomentosa/, <https://www.anbg.gov.au/gnp/gnp13/enchylaena-tomentosa.html>



Photo: anpsa.org.au

Above: growth habit of Ruby Salt Bush

Below: ripe fruit



Photo: anpsa.org.au

Below: Young seedlings



Photo: R.Fraser

Sarina Community Nursery Volunteer Program

The expansion of the nursery over the last 12 months has significantly enhanced our productivity and the health of our tubestock plants. With the additional space, we've been able to streamline our propagation efforts for various projects, making the entire process much more efficient. Our dedicated volunteers contribute to this success, assisting in the propagation of plants needed for these initiatives. Their assistance is deeply valued and greatly appreciated.



SLCMA volunteers tending to the plants in the nursery

Our last volunteer morning for the year will be Wednesday 11th December, as always this will be an extra fun morning with our volunteers (*we will send out details to our volunteers shortly*).

Are you eager to dive into your local community, connect with new friends, and discover the fascinating world of native plants and their propagation? Join us for the SLCMA Community Volunteer Morning every Wednesday from 9am to 12noon. It's a wonderful opportunity to learn, grow, and contribute! For more information, give us a call on 4956 1388. Get involved and make a difference! The SLCMA Community Volunteer Program is proudly supported by the Mackay Regional Council Natural Environment Levy.



Photos: S von Fahlend

Restoring Coastal Habitats for Marine Species Project



Photos: H Lynch, D Jooste, R Fraser



SLCMA are proud to work with Isaac Regional Council (IRC) on recent environmental enhancement efforts undertaken at Notch Point Coastal reserve. These works play a crucial role in preserving the unique coastal ecosystems of our region, particularly the vulnerable marine turtle nesting areas and endangered beach scrub.

Recently, we worked alongside IRC staff to install coastal bollard fencing along the sand dunes to protect the marine turtle nesting area. This fencing serves as a protective barrier, to minimise human disturbance and protect the integrity of the dunes particularly as a turtle nesting beach. *By informing visitors about these sensitive areas, we aim to ensure that our marine wildlife has the best chance to thrive.*

Additionally, wire fencing was installed to protect the endangered beach scrub. This native vegetation is essential not only for maintaining the ecological balance of our coastline but also for preventing erosion and providing habitat for various wildlife species. The new fencing will help to safeguard these vital ecosystems from further degradation.

We are pleased with the progress made, and are looking forward to working alongside IRC at Notch Point in the coming months. Other activities include installing new signage to educate visitors about the importance of these areas; targeted weed control and planting 3,000 local native plants—to enhance dune stabilisation and promote biodiversity. These efforts will bolster the existing habitat and contribute to the overall health of our coastal environment.



We would like to extend our thanks to Isaac Regional Council for involving us in this great project; their commitment to protect and enhance the unique area of coastline at Notch Point is commendable. Together, we are making strides towards protecting our coastal heritage for future generations and, we encourage the community to get involved and support these great initiatives so that Notch point remains not only a beautiful destination for all to enjoy campers but a thriving habitat for wildlife. Let's work together to protect our coastal treasures!

A Coastal Crusade: Cape Palmerston Clean-Up

On 23rd October, SLCMA staff and volunteers teamed up with Yuwi Aboriginal Corporation at Cape Palmerston to remove marine debris and rubbish from the Cape Palmerston shoreline. In just two hours, we collected 40kg of marine debris and rubbish ...and we could have kept going, there was so much more.

This was part of a 3 day event, hosted by the Yuwi Aboriginal Corporation which yielded more than two trailer loads of marine debris and rubbish. The sheer volume of debris littering the beach was astonishing, serving as a stark reminder of the urgent need to rethink our relationship with plastic. Every piece of trash we collected represented a tiny fragment of a larger issue—one that affects not just our coastlines but the vibrant ecosystems of the Great Barrier Reef.

This clean-up event was a powerful reminder of our individual and collective responsibility to reduce plastic usage and ensure proper disposal. By making conscious choices in our daily lives, we can help prevent our oceans from becoming dumping grounds for harmful waste.

Thank you to all our volunteers who came along and helped make a difference and, thank you to Yuwi Aboriginal Corporation for facilitating the event. Together, we can create a cleaner, healthier environment for us as well as the remarkable marine life that calls the Great Barrier Reef home. Let's keep the momentum going—each small action counts toward a significant change!

In true volunteer style, we took a moment to enjoy the beautiful beach surroundings, pausing from collecting marine debris and savoring a lovely morning tea under the shade of some coastal she-oaks.

The Great Barrier Reef Clean-Up is a collaborative effort to remove marine debris from the Great Barrier Reef and surrounding areas. It's part of the ReefClean program, which is run by Tangaroa Blue Foundation in partnership with Clean Up Australia. ReefClean is funded by the Australian Government's Reef Trust and delivered by Tangaroa Blue in partnership with several organisations.



SLCMA staff & volunteers collecting marine debris



SLCMA meeting up with Yuwi Rangers, prior to going on site.



Photos: S von Fabian

Volunteers enjoying a morning tea break

Sarina Hospital Native Garden Project

We are excited to partner with the Sarina Hospital to design and install a native medicinal plant garden at the entrance of the newly built hospital. The project was initiated by Karen Dawe, a retired nurse and hospital volunteer who reached out to SLCMA with a vision for the new hospital grounds. Karen proposed incorporating a native medicinal plant garden as a tribute to the local Traditional Owners' deep knowledge of local medicinal plants. We were eager to support this initiative and worked closely with Karen, the hospital's directors, and the Traditional Owners to create a thoughtful site plan, select suitable plants, and bring the vision to life.

After months of planning and preparation, the planting day arrived on Friday 8th November. Karen, SLCMA staff, Yuwi Rangers and Sarina Youth Centre came together with community volunteers, students from a local home-schooling group, Sarina State School and Sarina High School to help plant the 66 native plants. The students were excited to participate, learning about the native plants; their traditional uses and the importance of in the local ecosystem.

The native plants were generously provided through the Mackay Regional Council Community Free Native Plant Program, which SLCMA helps facilitate for the Sarina area. This program offers 50 free native plants each year to local community groups and schools. SLCMA also contributed an additional 16 native plants, bringing the total to 66 plants for the first stage of the garden.

This collaborative effort not only beautifies the hospital entrance but also honours the rich cultural heritage of the Traditional Owners and their medicinal knowledge. It was a rewarding and educational experience for everyone involved, and we are proud to have played a role in bringing this meaningful project to life.

L-R: SLCMA team preparing for planting; planting underway



Photo: contributed



Photo: S von Fahland



Photo: contributed

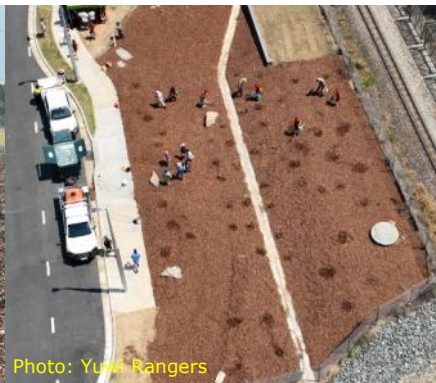


Photo: Yuwi Rangers



Photo: contributed

Looking for an Environmentally Friendly Christmas gift?

Make this Christmas special and sustainable with gifts that celebrate nature! We offer a delightful range of eco-friendly options, perfect for your loved ones who cherish the environment:

- **Native plants:** Choose from bushtucker varieties, ornamental plants of hanging pots or selections suited for small and large gardens alike.
- **Plant guard kits:** Protect the young plants with a plant guard kit includes guard, weed matt and 12 month slow release native fertiliser tablet.
- **Native plant books:** Inspire curiosity and knowledge with books dedicated to native flora.
- **Landcare membership:** Gift the joy of contributing to local environmental projects and activities.

Call us today! We're excited to help you find the perfect gift that's not only thoughtful but also kind to the planet.



Photos: SLCMA

Australian Tropical Herbarium: Rainforest Plant Identification Training

The SLCMA Field team and Nursery Officer enjoyed the opportunity to attend a *Rainforest Plant Identification* training course held at Airlie Beach recently.

Over the 3-day course, staff delved into the world of rainforest plant identification; gaining new skills in recognising plants by characteristics such as oil dots, leaf shape, and structure; and characteristics of common plant families—like spotting SAPINDACEAE with a pin instead of a terminal leaf and recognising EUPHORBIACEAE through their exudate (sticky, milky-white fluid with latex).

We are grateful to Stuart Worboys and the Australian Tropical Herbarium for their expert guidance throughout the course. "Stuart was a great teacher, and made the course very easy to understand and absorb. His wealth of knowledge is priceless" Adrian Brooks, SLCMA Field Officer.

It was an incredible experience to exchange knowledge and build skills for rainforest conservation! This valuable training was a collaboration with Reef Catchment, Pioneer Catchment & Landcare Group, Whitsunday Catchment Landcare Inc., SLCMA and QPWS. A big thank you to the QLD Government's Reef Assist Program, which supported our SLCMA staff to attend.

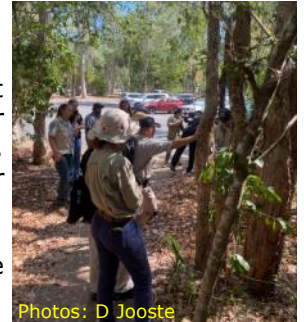


Photo: PCL

Fun Fact: Queensland's rainforests are some of the oldest in the world, dating back over 100 million years! Our rainforests such as those at Eungella National Park, are home to unique species like the Eungella Honeyeater, and a stunning array of plants, including the prehistoric-looking king and tree ferns and towering trees which support orchids, ferns and other epiphytes.



Staff putting theory into practice in the field, identifying plants



Photos: D Jooste

Calling Sarina Landholders: Help our Endangered Koalas!

Koalas are facing the threat of extinction, but you can make a difference! Through the Sarina Koala Habitat Restoration project, Reef Catchments is offering **free revegetation planting** and weed control for landholders in key areas, aimed at improving koala habitats.

This project seeks to create and enhance habitat corridors for koalas, connecting inland ranges to coastal areas. By participating, you'll be directly contributing to:

- 150 hectares of weed control to make habitat more accessible and reduce fire risk
- 27 hectares of koala-friendly revegetation

Reef Catchments are looking for landholders from **Sandy Creek to Koumala** who are interested in this important conservation effort and attracting koalas to their properties.

To express your interest, register here: <https://tinyurl.com/nhjat856> or contact Sandy Whittington-Shaw at sandy.whittington@reefcatchments.com to arrange a property visit and discuss what we can offer.



Photo: S von Fahland

Koala in Blue gum, Nebo

Sarina Community Native Gardens

While the gardens are looking a bit dry at this time of year, we still have some lovely flowers on show such as these dendrobium orchids. And we have no doubt the rest of the plants will respond quickly once they receive some rain. The Sarina Community Native Gardens are a must-visit for anyone passionate about native plants. We warmly invite the community and visitors to come and explore this living showcase of our region's unique flora. With the gardens always open to the public, you can wander through at your leisure. The plants are labelled to make identification a breeze. Whether you're a seasoned botanist or simply curious about native plants, the gardens offer a delightful experience for all.



Photo: S Tomlinson

Tea tree orchid (*Dendrobium canaliculatum*)

For those seeking a deeper dive into our plant life, we offer group guided walks led by our knowledgeable team. To arrange a special tour for your group, simply reach out to us on 4956 1388 or email admin@sarinalandcare.org.au. Come discover the beauty and biodiversity of the Sarina Community Native Gardens—an adventure awaits!



Golden orchid (*Dendrobium discolor*)



What SLCMA Membership does for you!

A membership with SLCMA has many rewards:

- ◇ Easy access to Natural Resource Management information and extension
- ◇ Monthly newsletter, meeting minutes, progress and project reports
- ◇ A vote on issues in your catchment
- ◇ A say in the types of projects applied for
- ◇ Up to 10 free local native seedlings/year from the SLCMA Community Nursery
- ◇ Invitations to Natural Resource Management field days and workshops
- ◇ Copy of the SLCMA Annual Report

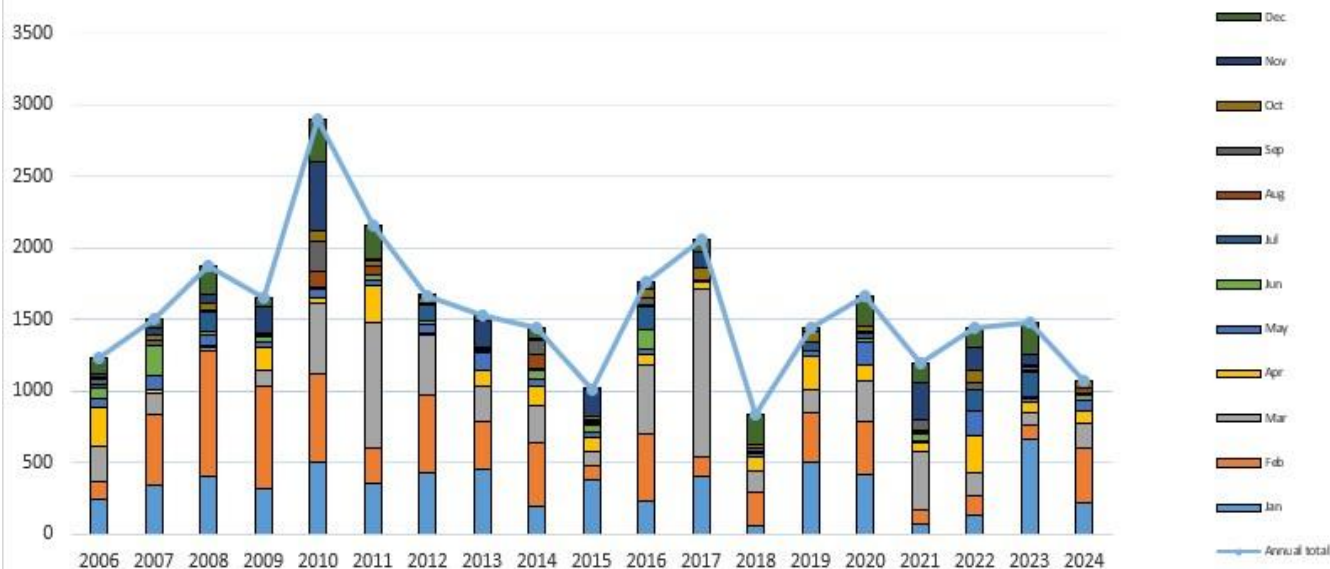
Address: 101 Sarina Beach Rd, Sarina QLD 4737

Phone: (07) 4956 1388

Website:
www.sarinalandcare.org.au

Email:
admin@sarinalandcare.org.au

Monthly rainfall for SLCMA Office, 2006 -2024 (inc annual total)



Please consider donating your Containers for Change to SLCMA. You can quote SLCMA's Scheme ID#C10002138 when you deposit your eligible containers **or**, you can drop your containers to us. It is a great way to help the environment and the community. You can reduce waste, save energy, and contribute to local environment projects and programs.



SLCMA's Scheme ID
C10002138



A partnership for the natural resource management of catchments in the Central Queensland Coast Bioregion: Pioneer, Sarina & Whitsunday Catchments.

Just for fun!

Q- Why did the scare crow win an award?

A- For being out standing in his field.

Q—Did you know 10+10 and 11+11 equal the same thing, because 10+10 equals 20 and what does 11+11 equal?

A—20 too

Q—What do you call a sleeping bull?

A—A bulldozer!

"If you have a garden and a library, you have everything you need"
 - Marcus Tullius Cicero



Find us on facebook



SLCMA is proudly supported by:

