

Annual Report 2021/22



2021/2022

Inside this issue:

Chairperson's Annual Report	1
Coordinator Report	2
Management committee members & staff	2
SLCMA: • Organisational objectives • Vision and Goals • Membership	3-4
Communication & publications	4
SLCMA Office: resource centre and educational precinct	4
SLCMA Community Nursery & volunteers	5
Sarina Community Native Gardens	6
Snapshot of Landcare activities	7
Projects and programs	8-11
Working Groups & events supported	12



Chairperson's Annual Report

SLCMA operates as a non-profit organisation, and we work with other stakeholders to achieve various environmental benefits. We provide project management and resources while project partners and sponsors provide finances and other support. Nothing would be achieved without our project partners and sponsors, and I would like to take the opportunity to thank them for their ongoing support these include Mackay Regional Council, Bendigo Bank Community Bank Sarina, Plane Creek Productivity Services Ltd, Reef Catchments, Dalrymple Bay Coal Terminal Pty Ltd, Dalrymple Bay Infrastructure, Aurizon, Great Barrier Reef Foundation, Australian Government and QLD Government.

I also wish to thank the staff, without staff we would not been able to help the environment. Saskia, and her team have done a great job in keeping safe and working together as a team to get these projects delivered. I would like to welcome Helen & Nate, who have started with us in the last couple of months. We have been lucky to increase our relationship with Reef Catchments, working together to gain more funding for the catchment. This includes the Reef Assist Program, in which we have been able to support the Revegetation team with training and onground projects.

I would like to thank the management committee for their ongoing support and guidance throughout the term. We have been busy working on updating SLCMA policies and procedures and investing in training for the management team, including leadership training and governance. We have also been working on a strategic plan over the last couple of months to help keep improving the organisation and the way we run.

The whole team of SLCMA would like to thank our volunteers over the last year for the enormous amount of work they have done in the following areas of the organisation. I would also like to thank everyone for their safety awareness and looking after one another.

- Wednesday morning – Nursery Volunteer Program – seed collecting and growing native plants
- Friday morning - Friends of the Sarina Community Native Gardens – the gardens are continuing to expand and get better
- Water quality testing throughout the catchment
- Community Working bees – marine debris collection and weed removal

Some projects we have been working on throughout the year include:

- Cats Claw Creeper control in Carmila Creek
- Coordinated Feral Pig Control in Rocky Dam, Carmila and Clairview catchments
- Reef Assist Program
- Sarina Catchment Waterwatch
- Rehabilitating the Sarina Catchment
- Enhancing the Sarina Inlet Trail
- Small Acreage Roadshow (Sarina) – Land care and small livestock care

My goals over the last year were to run an event to help small hobby farms; with the help from Saskia and the other Landcare groups within our region, we were able to do this. We had a great roll up with graziers and hobby farmers and received great feedback from those who attended. We look forward to similar events in the future.

Any questions happy to answer or take on notice.

Thanks,

Lachlan McBride
Chairperson.



Lachlan McBride,
Chairperson

Coordinator's Report

As you can see from this year's Annual Report, it has been a busy year; we have continued to deliver a diversity of projects and programs within the Sarina catchment—from pest management activities, coastal and riparian rehabilitation projects, to land management support, volunteer opportunities and awareness raising events, just to name a few.

This success is only made possible with the commitment of all the SLCMA team; through the successful application for project funding and sponsorships (for which we are grateful) and; ongoing collaboration with our project partners and stakeholders.

We have continued to be able to offer a range of services to the community throughout the year including:

- plant identification and land management support
- providing native plants through plant sale events or the 'click & collect' option
- supporting local events such as the St Lawrence Wetland Weekend, QLD Museum's Unearthed
- facilitating volunteer opportunities such as nursery volunteer program, Friends of the gardens, National Tree day, Great Northern Clean Up and working bees across the catchment
- support local school by attending Under 8's days, hosting work experience students and resources
- Onground works with the SLCMA Revegetation Team

We are also in the process of updating our strategic plan, to help guide the future direction and sustainability of SLCMA.

I would like to take this opportunity to thank the SLCMA staff for working together, taking pride in the tasks they undertake and making a difference on a daily basis; to the SLCMA Management committee for their input and guidance and our project partners for their support.

Thank you,
Saskia von Fahland, Coordinator.



Saskia von Fahland,
Coordinator

2021/22 Management Committee Members and Staff

Management Committee Members:

Chair	Lachlan McBride
Vice Chair	Karen May
Treasurer	Kevin Plumb (<i>to Sep 2022</i>) Karen May (<i>Acting Treasurer, from Sep 2022</i>)
Secretary	Shirley Sidey
Management Committee Members	Rod McFadzen

Staff:

Coordinator	Saskia von Fahland
Administration Officer	Kristy Thomsett (<i>to May 2022</i>) Helen Dangerfield (<i>from July 2022</i>)
Project Officer	Morgan Thomas (<i>to August 2021</i>) Susan Whiteley (<i>October 2021 to August 2022</i>)
Reef Assist team	Darrin Fuller Alana Campbell (<i>to October 2021</i>)
Nursery Officer	Susie Tomlinson
Revegetation Officers	Vynka von Fahland, Peter Whitehead, Justine Dauwerse (<i>to Dec 2021</i>)

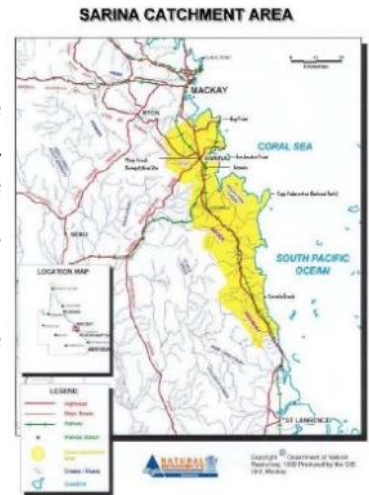


L-R: Susan, Susie, Saskia, Kristy, Helen, Darrin, Vynka, Justine & Peter

Organisational Objectives

The objectives of Sarina Landcare Catchment Management Association Inc. are:

- To promote a strategic and integrated approach to natural resource management and biodiversity conservation in the Sarina Catchment area.
- To foster coordination and cooperation between land managers, community groups, industry and government agencies in their natural resource management activities.
- To promote understanding and awareness of the interactions and relationships between the natural systems and resources of the catchment.
- To identify and prioritise natural resource management issues within the Sarina Catchment Area.
- To prepare, coordinate and implement priority action plans identified in the Sarina ICM Strategy.
- To promote sustainable solutions and actions through strong community, industry and government partnerships in catchment management strategies.
- To provide a forum for community and government discussion on natural resource and catchment management issues.



SLCMA's Vision and Goals

Vision for the Sarina Catchment

The Sarina Catchment Area is an economically viable region, which is ecologically sustainable and well regarded as a healthy place to live and work

Goals

- Land Use Planning:** The land resources of the Catchment are managed in an ecologically sustainable manner.
- Land Management:** The most appropriate ecologically and economically sustainable land management practices are adopted throughout the catchment.
- River/Creek Management:** The creek systems are managed in such a way as to enhance and maintain their natural values while providing for the needs of the catchment community.
- Water Management:** The integrity of the natural systems within the catchment are enhanced and maintained while providing water of a suitable quality and quantity to meet the needs of the community.
- Coastal Management:** Management of the coastal area in a way that will ensure the sustainable use of the natural resources
- Vegetation/Biodiversity:** The native vegetation and biodiversity values of the catchment are enhanced and maintained and the natural systems are not further degraded.
- Community Awareness and Involvement:** A community that is aware of the need to maintain and improve the natural resources of the catchment and is actively involved in doing so.

SLCMA Membership 2021/22

Class of Membership	Is membership of the class to be limited or unlimited in number?	If the class of membership is to be limited in number, how?	Limitations relating to the class of membership	Entry requirements for class of membership	Number of members
Government Organisation Member	Unlimited	N/A	1. Full voting rights	Open to nominated Councilors of local authorities within the Association's catchment area, and nominated officers of State Government departments or authorities, or divisions or branches within them.	15
Associate Member	Unlimited	N/A	1. Full voting rights	Shall be opened to nominees of: Companies and Cooperatives carrying out activities within the Catchment area. Local organizations and institutions. Local groups with a direct interest in land use	38
Ordinary Landcare Member	Unlimited	N/A	1. Open to any adult owners or occupiers of land 2. Full voting rights	1. Must be over 18 years of age 2. Annual fee for membership, the amount to be decided at an annual general meeting	108
Junior Member	Limited	There are to be no more than 50 Junior members at any time	1. May not vote 2. Not eligible for election to management committee positions	1. Must be under 18 years of age 2. Must be a registered Junior Landcare member.	4

SLCMA Membership benefits!

A membership with SLCMA has many rewards:



- ◇ Easy access to Natural Resource Management information and extension
- ◇ Landcare newsletter, meeting minutes, progress and project reports
- ◇ A vote on issues in your catchment
- ◇ A say in the types of projects applied for
- ◇ Up to 10 free local native seedlings from the SLCMA Community Nursery each year
- ◇ Invitations to Natural Resource Management bus tours, field days and workshops

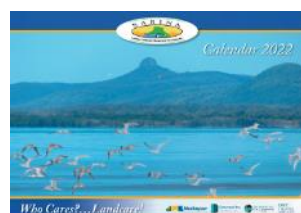
Communication & publications

- **SLCMA Catchment News** is distributed to approximately 180 recipients. The newsletter is a great way for members to keep up-to-date with available funding, workshops, field days, volunteer opportunities and the latest in natural resource management news. *Thankyou to Michelle Landry MP for producing colour copies of the newsletter for our members who receive the newsletter by post.*
- **SLCMA website and facebook page** are a great way for the community and members to keep up-to-date with what is happening in our catchment. We have updated our plant ordering process online, with links to plant information on the Central QLD Coast Landcare Network plant database. *Thankyou to Kapow Interactive for their support towards the SLCMA and the associated Central QLD Coast Landcare Network website.*
- **Local plant database** Over the past year, we have been hard at work on the Central Queensland Coast Landcare Network (CQCLN) part of the website, which we share with the Pioneer and Whitsunday Landcare groups. The local plant database on this website has been updated to hold botanical information on almost all the plants which have been grown in the nursery. This information includes flower and fruit characteristics, life form, distribution, habitat and some ecological notes. In addition to the native local plants, the common weeds in the area are also listed.



QR code for local CQCLN plant database

We do not currently have photos for all the plants but we will continue to build on this. If you are interested, we do have a list of photos we are chasing, with the aim of having photos of the plant, leaves, flowers and fruit for all the plants on the database. Please reach out if you would like this list, to help contribute any photos you might take.



- **SLCMA Calendar 2022** was well received by members, schools and volunteers. It is a great opportunity to showcase places of interest and critters from around the catchment. It also includes important dates such as meetings, environmental awareness events and cattle sales. *Thankyou to Mackay Regional Council, Dalrymple Bay Coal Terminal PTY LTD and Dalrymple Bay Coal Terminal Management for their contribution towards the printing costs.*

SLCMA office: resource centre & educational precinct

SLCMA is well supported by Mackay Regional Council; who allow us to operate from the building at 101 Beach Rd. The office is utilised by staff and volunteers in daily Landcare activities and as a resource centre for volunteers, members and landholders to access land management information. Throughout the year, our office precinct has been the hub for many workshops, volunteer morning teas and tool maintenance operations as well as, a demonstration of activities including: Sustainable food gardens, Sarina Community Native Gardens, Native bees, SLCMA Community Nursery and Water Treatment Train.

Sustainable Food Gardens—The working food gardens are monitored and cared for by volunteers. They provide an opportunity for volunteers to get their hands dirty and share in produce. The gardens include raised garden beds, native bees and worm tubes as an opportunity for community members to learn about growing your own food in a sustainable manner.

Worm farm & composting—Learn about integrating wriggly worms and compost into your backyard garden system; to minimise waste, recycle nutrients and improve soil health.

Water Treatment Train: Wetlands are important to our community because they play a key role in providing biodiversity and hydrological functions vital to keeping the land, water, sea and Great Barrier Reef healthy and productive. This is a working display of a wetland system, demonstrating how natural and artificial wetlands function to remove sediment, nutrients and pesticides from the water that passes through them. The "Water Treatment Train" was installed in 2017 in collaboration with Department of Agriculture and Fisheries (DAF) and, consists of 4 connected chambers with local native water plants and educational signage.



Staff & volunteers working in office gardens

SLCMA Community Nursery

The SLCMA Community Nursery was built in 2003 by SLCMA volunteers and the Sarina Green Corps team. It is utilised as a training facility for the community and a base for the SLCMA Community Volunteer Program; to learn about native plants, plant propagation and general nursery practices. It also allows for the propagation of local native plants for local and regional rehabilitation projects, community projects, gardens and landscaping.

In the past year, the nursery has provided almost **7000 native plants to the community**, for planting back into our catchment. Plants were provided to:

- Landcare Members *through the annual free plant allocation of 10 plants per member*
- Land for Wildlife (LFW) landholders *through the annual free plant allocation of 20 plants per LFW registered property*
- Support Mackay Regional Council Free Plant Giveaway for schools and community groups in the Sarina area
- Small and large-scale rehabilitation projects such as creekbank projects along Cherry Tree and Plane Creek creeks and, coastal sites such as Carmila Beach and Louisa Creek Reserve.



Happy customers at one of our plant sales



We also continue to sell plants to the community, with the funds raised, put back in, to support the running costs of the nursery. We have continued to promote (and refine) our 'click & collect' plant orders and, have held three native plant sales throughout the year, all of which has been well supported by the community.



Costa Georgiadis visiting

Thankyou to the Landholders who have given us permission to collect seed on their property and to those who have brought seed in throughout the year. We continue to seek new local species to propagate and further diversity our species list, which currently consists of **over 150 different species**.

A big thankyou to our volunteers who assist staff on a weekly basis to keep our seedbank full and tend to the plants in the nursery. And a **huge thank you to our Nursery Officer, Susie**, who continues to refine the nursery operations to ensure we can continue to supply, good quality, locally adapted native plants to our region. We also have some exciting plans for next year, so watch this space.



We always get excited when we have visitors, one person in particular who dropped in and created a bit of extra excitement was Gardening Guru, Costa Georgiadis. Susie and our volunteers were happy and proud that Costa enjoyed his stop by the SLCMA Community Nursery and had a look at our plants, thank you :)

SLCMA Community Volunteer Program

Wowzas, the SLCMA Community Volunteer Program is now in its 19th year! A big thankyou to all our volunteers past and present. This year we have welcomed a few new volunteers and continued to enjoy the company of our long-standing volunteers. A big thankyou to all of our volunteers who have continued their dedication, coming along every Wednesday, 9am—12noon. Collectively, our volunteers contributed over 1000 hrs in the last 12 months—what a great effort!

The volunteers mainly operate in the SLCMA Community Nursery undertaking cleaning and sowing seeds, potting up seedlings and of course, the fun jobs of weeding and washing pots. We have also been on a few of plant identification and seed collecting trips around the catchment including Plane Creek, Freshwater Point; Carmila, Sarina and Hay Point Beaches.

We are also proud that our volunteer program is a place to connect with like-minded people, share stories, form friendships and enjoy a friendly chat over a cuppa. The SLCMA Community Volunteer Program receives much needed and appreciated support from the Mackay Regional Council, Natural Environment Levy.



Volunteers in the nursery (left) and collecting seeds at Hay Point Beach (right)

Sarina Community Native Gardens

A big thank you to Susie, our Nursery Officer who has worked hard throughout the year to ensure the Sarina Community Native Gardens continue to evolve and provide a wonderful display of a variety native plants, for locals and visitors.

We have continued to facilitate the ***Friends of the gardens*** volunteer program on Friday mornings, giving the chance for local volunteers to use their 'green thumb' skills and help out with planting, mulching, weeding and watering. While we haven't had lots of volunteers, we thank the few volunteers who have joined us throughout the year. We are working on ways to promote the gardens and involve more volunteers in the coming year.

Thank you to the SLCMA Revegetation Team who have helped Susie with the hard yakka jobs including whippersnipping, pruning and chipping branches.

In late 2021, we utilised the gardens for our Community Fun Day, to celebrate SLCMA's 20th birthday. The event was well supported with displays, stalls, fun activities and presentations as well as, a commemorative tree planting with the SLCMA Management Committee and Mayor of Mackay Regional Council, Greg Williamson.

In 2022, we have had the pleasure of a re-visit from Costa Georgiadis, who officially opened the gardens in 2013. The changes over the years have been amazing with many of the plants now flowering, seeding and providing habitat for a variety of native birds and wildlife. Over the time, we have achieved many milestones including the installation and extension of a seasonal wetland, walking track, boardwalk and themed gardens including the sensory gardens and local habitats.

The Sarina Community Native Gardens began in 2009, with the aim to demonstrate and promote the use of native plant in gardens and landscaping situations as well as provide an educational opportunity for locals & visitors to learn about local native plants, their benefits & uses in various situations.



Did you know that you can help local koala populations and habitats by recording your koala sightings. The Central QLD Koala Advisory Group is working with Padaminka Nature Refuge Koala Rescue and Care to increase their knowledge of local koala populations. See below on how to record your sightings:



<https://sarinalandcare.org.au/participate/>

<https://fba.org.au/biocollect-app-for-koala/>

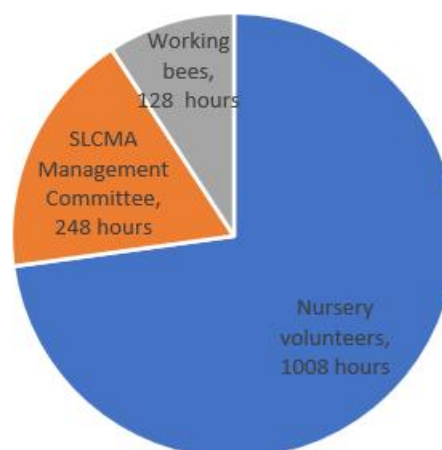


<https://fba.org.au/step-by-step-instructions-for-downloading-and-using-the-biocollect-app/>

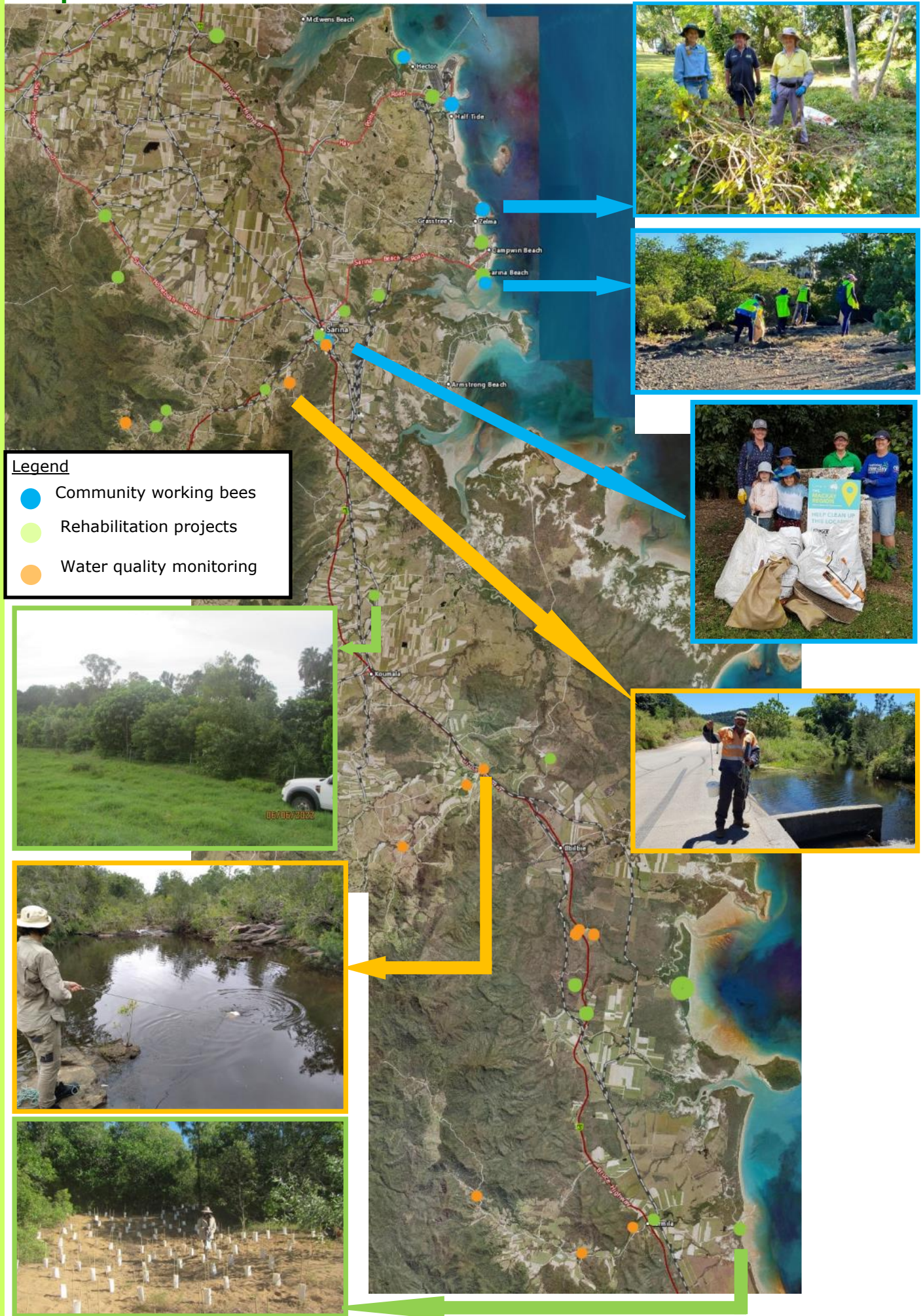


Thank you to our volunteers!

Our Landcare volunteers contributed over 1400hrs towards Landcare activities this year! These includes (*but not limited to*) SLCMA Management Committee members, Nursery volunteers and Community Working bees, see below for more details:



Snapshot of Landcare activities across the catchment



Pest management projects:

Coordinated Feral Pig Control Program

SLCMA continues to deliver the Coordinated Feral Pig Control Program across the Rocky Dam, Carmila and Clarview catchments. The program, which has operated since 2008, was co-funded this year by private landholders, Reef Catchments and in-kind support by SLCMA.



The success of the program is attributed to a coordinated approach with landholders and stakeholders including Plane Creek Productivity Services, Council and Department of Resources. It also compliments and aligns with other aerial feral pig control programs across the wider Mackay Whitsunday region.

The program engages with over 50 landholders across a range of landuses (cane, grazing & horticulture), who participate voluntarily in one or more of the control methods, at different times of the year. The different control methods include trapping, baiting (with Council) and the annual aerial control event. The annual aerial control event was held in December 2021 which led to 180 feral pigs were controlled. For the first time a mid-year aerial shoot was conducted in June 2022, in which 34 feral pigs and 2 wild dogs were controlled.

It is great that landholders are working together and recognise that a pig controlled a few kms away is still of benefit to them and their property. The coordinated approach allows for a large area of the catchment to be covered in a short space of time, increasing the potential to reduce feral pig numbers and hence reduce negative impacts on farming land and natural areas.

Fox, what fox?

Foxes are becoming more apparent in our region, particularly in our coastal zones. Foxes are a potential threat to native fauna such as the water mouse, northern quoll, marine turtle and ground nesting bird populations by feeding on nests and young.

SLCMA was successful in seeking funds through the *Queensland Government's—Community Sustainability Action* grant program, to undertake fox detection surveys at Mt Hector Conservation Park, Cape Palmerston and Westhill National Parks. The 18-month project began in July 2022 and provides an opportunity to work in partnership with QLD Parks and Wildlife Service (QPWS) and Mackay Regional Council to build on previous fox detection surveys within the region.

Mackay Regional Council have worked with Southern Queensland Landscapes – Project Delivery Officer Tom Garrett and Rocky the Conservation Detection Dog; to undertake annual surveys and eradication of foxes on public and private land within the Mackay Regional Council area over the last few years.

This project links into the current fox detection program and extends the monitoring to within the identified park areas. The project will improve the knowledge of presence and location of foxes within the park areas and guide the future direction, monitoring and eradication activities to protect native wildlife.

The first monitoring survey for this project was conducted in October 2022. There was evidence of fox movements in and around all the park areas, and two active dens identified and fumigated within Cape Palmerston National Park.



Conservation Detection dogs, Rocky & Cooper with Dog Handler, Tom Garrett



A community meet & greet event was held at Louisa Creek reserve, which was well attended by the community. It was an opportunity to learn first hand how the surveys' are conducted, find out more about foxes within the region. We look forward to working on the project in the months to come and being able to support a great initiative for the region.

Weeds...

Weeds and their monitoring and management, are a big part of rehabilitating our natural areas. Our Revegetation team work tirelessly to keep the general weeds within our project sites under control to allow for the native plants to establish (*whether planted or through natural recruitment*).

Some sites have the presence of restricted invasive weeds (under the [Biosecurity Act 2014](#)), which require a targeted approach to survey, control and monitor. These have included the following category 3 restrictive invasive plants:

- **Bellyache Bush:** working with Department of Resources and the community to survey and remove infestations throughout Grasstree Beach area.
- **Madeira Vine:** working with Mackay Regional Council to monitor and control infestations within the Plane Creek Revegetation Site.
- **Cats Claw Creeper:** working with private landholders to survey the extent of, and control infestations along sections of Plane and Carmila creeks.



Through ongoing funding and support from our project partners we aim to continue to monitor and control these infestations, to reduce their extent and opportunity to spread.

Coastal management projects:

The Sarina Catchment includes vast sections of coastline which includes sensitive dunal systems and coastal vegetation, rocky headlands and areas of the endangered Littoral Rainforest and Coastal Vine Thickets. Throughout the year, we have work alongside the community and project partners to rehabilitate, protect and enhance priority areas, to ensure biodiversity and health of the coastal areas are maintained into the future. Some of these project sites include:

- **Louisa Creek Reserve**—is highly regarded by the community as a valuable coastal environment that provides a buffer between residential land and the important mangrove and estuarine habitat. It is registered under the Land for Wildlife Program and over the years has received support from many project partners to ensure its rehabilitation and protection. SLCMA continues to work in partnership with Mackay Regional Council and the community to undertake rehabilitation activities in stages, across the site. Our Revegetation Team through the Reef Assist Program have continued to undertake weed control, mulching & planting to improve the health and biodiversity of the reserve.



National Tree Day at Louisa Creek Reserve

This site was chosen this year as a National Tree Day planting site, which saw SLCMA staff work alongside staff from Dalrymple Bay Coal Terminal PL, Dalrymple Bay Infrastructure, BMA and Mackay Regional Council to plant 150 plants within the reserve.

- **Enhancing the Sarina Inlet Trail** —funded through the Aurizon Community Giving Fund. The "Sarina Inlet Trail" is a 400m bush walking track that meanders through a small but diverse area of native coastal vegetation at Sarina Beach. The trail is well utilised by residents and visitors, providing a link between Sarina Beach and Johnson Beach. The project will help to reduce weed invasion and enhance the biodiversity of the native coastal vegetation along the trail as well as provide an opportunity to engage with the community, to raise awareness about the importance of the site within the coastal environment.



Before & after: rehabilitation along Sarina Inlet Trail

Our Revegetation team have been undertaking targeted weed control specifically Singapore daisy (*Sphagneticola trilobata*), Guinea grass (*Megathyrsus maximus*) and Lantana (*Lantana camara*) along the trail, to encourage native regeneration of native plants with some complimentary revegetation.

- **Rehabilitation of Carmila Beach Reserve**—The SLCMA Revegetation team have been hard at work undertaking restoration works along Carmila Beach. The sites stretch along the Carmila Beach Reserve and include the critically endangered 'littoral rainforest and coastal vine thickets of eastern Australia' ecosystem. These vegetation types are known to provide essential habitat for the northern quoll, beach stone curlew and the mangrove mouse and a number of other listed species including the black-throated finch (*Poephila cincta*) and the lesser swamp-orchid (*Phaius australis*). In addition, the Carmila Beach area is highly valued by our community for its natural values and, is well utilised by travellers and locals for camping and recreational activities.



Biocondition assessment of Carmila Beach

The project has seen 2,050 local native plants planted across seven sites within the coastal vegetation. The planting sites were chosen in areas most impacted by weeds and where thinning of native vegetation and loss of canopy cover is occurring. Initial site preparations included undertaking a vegetation condition assessment with Reef Catchments (RC), plant species selection (sourced from the SLCMA Community Nursery) and weed control. SLCMA is pleased to be undertaking the ongoing maintenance of the sites, to ensure the plants get the best chance of survival and growth. If you are down in the area you might like to admire this hard work and see the new plants that are striving to improve the health and resilience of this important ecosystem. This project is supported by Reef Catchments and Isaac Regional Council, through funding from the Australian Government's Reef Trust.

- **Rehabilitating the Sarina Catchment** — a Community Action Plan project funded by the partnership between the Australian Government's Reef Trust and the Great Barrier Reef Foundation. This project focusses on rehabilitating coastal sites at Grasstree and Carmila Beaches to increase their health and biodiversity through weed control, revegetation, marine debris clean-ups and community events. As part of the project SLCMA worked with Sarina State High School students to remove 90kg of *Callisia fragrans* (a garden escapee) from the coastal dunes. The students also learned about the values, threats and mitigation strategies to our coastal areas.



Planting at Grasstree Beach

Other projects...

- **Sarina Landcare Support Project**—funded through Mackay Regional Council—Natural Environment Program. This annually funded project supports SLCMA to provide ongoing services to landholders and the general community through activities such as the SLCMA Community Volunteer Program, environmental awareness events, displays at local events, working with stakeholders, coordination of projects and workshops, support for local schools. This project is invaluable for allowing our staff to work in the community and network with project partners and stakeholders—often leading to the development of new projects and sourcing of additional funding from outside the region.
- **DBCTPL Bundwall Project**— Our Revegetation team has enjoyed the opportunity to work on a revegetation site at DBCT—improving the biodiversity and aesthetic values of a bundwall onsite. The site has come in leaps and bounds over the last 12 months through regular watering and weeding.
- **Rehabilitation along Cherry Tree Creek**— SLCMA began revegetation on a private property along Cherry Tree Creek in January 2020, in a bid to re-instate riparian vegetation that was effected by Cyclone Debbie in 2017. The project, funded through Reef Catchments, has included planting over 800 plants and more importantly the opportunity to provide regular maintenance of the site including weed control, watering and general maintenance. The hard work of the SLCMA revegetation team to undertake regular maintenance has been integral to the site's success. *Funded by Reef Catchments.*
- **Reef Assist Program**—funded by QLD Government through Reef Catchments. This program has supported the employment of 2.5 full-time staff to deliver rehabilitation activities across the catchment including supporting landholders with land management support, onground works and free native plants. The full-time two person Reef Assist team have been able to access training and up-skilling in *Certificate in Conservation and Land Management* as well as practical experience on the ground. We thank the onground team for their hard work and dedication in often harsh conditions to work across the catchment—tackling weeds, rehabilitating important environmental sites and giving local landholders a helping hand. The Reef Assist Program has been a great initiative and has allowed SLCMA another opportunity to work alongside our project partners and support landholders in the catchment.
- **Sarina Catchment Waterwatch**—funded through QLD Citizen Science Grants. Our ongoing citizen science Sarina Catchment Waterwatch program has passed the half way mark. The program has been building a picture of the water quality over time in four creeks across the Sarina Catchment. So far, we have had 11 community volunteers trained in water quality monitoring, but we are always keen to train more if you would like to contribute your time. Each month our volunteer citizen scientists measure the electrical conductivity, pH, dissolved oxygen, turbidity, water flow and weed invasion. In addition, SLCMA staff are conducting baseline monitoring and laboratory sampling to discover the presence of herbicides. A very big thank you to all our volunteers.

This monitoring will allow us to develop a picture of the water quality across the catchment, which all feed into the Great Barrier Reef Lagoon. This project is proudly supported by the Queensland Government – Queensland Citizen Science Grants.

- **Sarina 4WD & Outdoor Centre gardens**—We enjoyed the opportunity to promote the use of native plants in this local business' garden. A big thank you to Sarina 4WD & Outdoor Centre for entrusting our Nursery Officer, Susie and Revegetation Team — to give their gardens a facelift, using native plants from the SLCMA Community Nursery. The gardens were prepped and re-planted at the end of 2021 and include a variety of native plants of with different shapes, sizes and colours including Cats whiskers, Lomandra, Winter apple, Paroo lilly, Sims wattle & Native rosella. The plants have settled in nicely, complete with an array of flowers. Be sure to check them out on your next visit to Sarina 4WD & Outdoor Centre :)



Land for Wildlife Program

The Land for Wildlife program has continued this year with all its wonderful benefits. The program recognises landholders working to encourage and provide habitat for wildlife. As always, we welcomed new members and revisited some of our existing members.



The program will continue into the next year, so if you have a property larger than 1 hectare with some retained vegetation, please reach out if you would like to join the program. The benefits include, a site visit, a personalised land management plan, access to land management information and advice, 20 free native plants per year, opportunities for property revisits, plant identification, invitations to field days and workshops, a quarterly regional newsletter and access to a 'closed' Facebook page where you can communicate with other members of the program.

This past year in addition to our usual activities we held a workshop aimed at encouraging wildlife visitors. This involved a presentation on what is 'habitat' and how to protect, create and enhance habitat, detecting wildlife visitors through motion sensing cameras (ably presented by Tom Curtis) and a practical component where attendees built their very own nesting box to take home.

The Land for Wildlife program is a voluntary program that recognises landholders who are making a significant effort to encourage and provide habitat for wildlife on their properties. This is achieved by conserving and actively managing habitat as well as integrating nature conservation with other land uses such as agriculture, grazing or tourism.



The Land for Wildlife program is delivered within the Mackay Regional Council boundaries of the Sarina Catchment by SLCMA and the Pioneer Catchment by Pioneer Catchment and Landcare Group (PCL); on behalf of the Mackay Regional Council Natural Environment Program. This coordinated approach provides consistency across the region and beneficial linkages to other complimentary projects and programs.



Supporting our local schools

SLCMA continues to provide support to our local schools, through the Landcare Support Project funded by Mackay Regional Council Natural Environment Program. This funding provides SLCMA the capacity to support local schools for up to 5 days per year with support such as providing technical advice, delivering educational activities, assisting teachers and students with resources and information and, seeking opportunities for additional funding for complimentary projects.

- Hosting of Sarina State High School work experience students
- Sarina State High School Geology students met at Grasstree Beach, to learn first hand about weeds and their impact on the coastal environment.
- Providing hands-on interactive activities for Under 8's day events at Alligator Creek and Dundula State Schools and St Annes Catholic Primary School.

SSHS students removing 90kg of the garden escapee Callisia repens from Grasstree Beach foreshore.



Things we've learnt...

Revegetation Tip #1

Ensure you have:

1. Skilled, motivated, energetic Revegetation Officers
2. Helpful, interested, appreciative Landholders
3. Healthy native plants to plant
4. A wonderful, unique site to work on
5. And last but not least....local brogas to supervise!!



Working Groups supported

SLCMA is proud to support the following working groups:

- Central QLD Coast Landcare Network
- Mackay Whitsunday Regional Pest Management Group
- Healthy Rivers to Reef Partnership
- Mackay Whitsunday Isaacs Wetland Working Group
- Central QLD Coast Koala Advisory Group



Supporting Community Events

SLCMA was out & about throughout the year, with Landcare displays, facilitating workshops and working bees at various locations including:

- Great Northern Clean Up at Plane Creek Revegetation Site
- Community Fun Day—Celebrating 20 years of Landcare in Sarina
- National Tree Day with DBCTPL & Mackay Regional Council at Louisa Creek Reserve
- Composting and worm farming workshops, with Mackay Regional Council
- Community working bees— Weeding at Plane Creek Revegetation Site, marine debris clean up at Sarina Beach, Bellyache bush removal at Grasstree Beach
- Sarina 4WD & Outdoor Centre Open Day
- St Lawrence Wetland Weekend
- Qld Museum's Unearthed event at the MECC



Composting workshop; Susan, Tim & Luke

L-R: Susan & Shirley at 'Unearthed'; St Lawrence Wetland Weekend—Susie, Costa, Saskia and SLCMA display



SLCMA is supported by:



Community Bank
Sarina

