

Annual Report 2020/21



*2020/2021
Financial year*

Chairperson's Annual Report

As you all know, SLCMA operates as a cooperative arrangement between the organisation and the other stakeholders in order to achieve various environmental benefits. We provide expertise, project management and resources while project partners and sponsors provide finances and other support. Nothing would be achieved without our project partners and sponsors and thus my report this year begins with a heartfelt thank you to them. These include Mackay Regional Council, Bendigo Bank Community Bank Sarina, Great Barrier Reef Marine Park Authority, Plane Creek Productivity Services Ltd, Reef Catchments, Dalrymple Bay Coal Terminal Pty Ltd, Dalrymple Bay Infrastructure, Australian Government and QLD Government.



Mark Evans, Chairperson

I also wish to thank the staff whose often selfless dedication has seen significant forward development in the life of SLCMA. Saskia as Coordinator and Kristy as Admin Officer have been a wonderful team in the office. Morgan as Project Officer until recently and Susan who has just joined our team have been doing a great job in managing the various projects and I foresee continued development in this. Morgan has moved on to another position and we wish him well in the future. Susie who replaced Davina as Nursery Officer has continued to develop the nursery operations and I have to say, the nursery has never been better. Then there are the field staff who deliver the projects on the ground, often in trying conditions and in the face of considerable physical obstacles. Thank you for your efforts. Without the onground work, we achieve nothing.

I also wish to thank the Management Committee for your dedication and contributions in the year past. It has been wonderful to work with a group whose approach has been to solve problems as they arise, to set in place protocols and systems to reduce the likelihood of recurrences and to do so in a spirit of cooperation and good will without seeking to place blame on others.

The Volunteers too have contributed markedly over the past year. The enormous amount of work done in the nursery propagating local native plants have made it possible for us to supply plants for revegetation and rehabilitation projects as the need arises. Those who work as Friends of the Garden and at other times have turned the Sarina Community Native Gardens into a wonderful place which continues to develop. Great job all.

The benefits of our revised staffing structure really came into play early in the year when we were successful in our funding application through the Reef Assist Program. This led to our Project Officer becoming full time rather than part time and that continues until early in the new year. It also meant employing two full-time field staff so we now have two revegetation teams working.

Other projects for the year include a range of coastal, riparian rehabilitation projects, fishway and water quality monitoring, weed and feral pig control activities and landholder support programs.

Continued Covid compliance measures remain in place. The Queensland check in requirements apply and the facilities for doing this, are in place. Hand sanitiser remains in place. Whether these vary when the borders reopen will depend on what restrictions the Government put in place. We continue to monitor the situation to ensure the safety and well being of all involved with SLCMA.

There have been several improvements and events during the year that we should note. These include the purchase of a new vehicle and trailer made necessary and possible by the Reef Assist project. We now have a Square Reader to enable us to run eftpos transactions and a credit card to facilitate minor transactions and avoid the refunding situation that was previously in place.

Our staff participated in various conferences and training sessions through the year. These included Biocondition training, First Aid, Vegetation Management Workshop and Jag cichlid training day, to name a few. There were also developmental sessions for the volunteers such as field trips and a workshop on native bonsai. There were a few of our members bonsai plants on display during our 20th birthday celebrations.

<i>Inside this issue:</i>	
Chairperson's Annual Report	1 – 2
Coordinator Report	2
Management committee members & staff	2
SLCMA: • Organisational objectives • Vision and Goals • Membership	3
Membership benefits	4
Communication & publications	4
SLCMA Office: resource centre and educational precinct	4
SLCMA Community Nursery & volunteers	5
Projects and programs	6-9
Working Groups Supported	10
Supporting Community Events	10



Chairperson's Report ...continued ...

Earlier this month (October 2021) we celebrated 20 years of Landcare in Sarina, with a big gathering held in the Sarina Native Community Gardens. We welcomed Mackay Regional Council Mayor, Greg Williamson who gave a speech and help plant a commemorative native plant to mark the occasion. Our project partners and supporters were also presented with certificates of appreciation as thanks for their ongoing support for our organisation.

Our occasional general meetings have been held on Wednesdays to enable the volunteers to participate.
Mark Evans, Chairman, 25/10/2021

Coordinator's Report

Did you know that SLCMA turned 20 this year! A lot of has happened in those 20 years, since the amalgamation of *Sarina Integrated Catchment Management Inc.* and *Sarina & District Landcare Group Inc.* on the 16th October 2001. I have been fortunate to be part of the organisation since 2003 and have been lucky to work alongside many Landcare staff and volunteers along the way — all who have the familiar passion for Landcare, enthusiasm to understand and care for our catchment and support the community to be involved.

I was humbled to be nominated for a Sarina Womens Week award this year for my contribution to Landcare over the years. I would like to acknowledge the whole Landcare team, project partners and funding providers, who together make our Landcare activities, projects and programs a success.

We have continued to work on a range of projects throughout the year, as you can see in this annual report; from citizen science activities and native plant propagation to marine debris clean-ups, landholder support and natural area restoration projects...as well as workshops, field trips and school activity days...just to name a few.

Many thanks to our Landcare staff and volunteer management committee members for their ongoing support and efforts. A special mention and thank you to Mark and Sandy Evans who are stepping down from the management committee after 3 years—thank you.

Lets keep the Landcare movement in Sarina going for the next 20 years (& beyond).

Saskia von Fahland, Coordinator



Saskia von Fahland,
Coordinator

2020/21 Management Committee Members and Staff

Management Committee Members:

Chair	Mark Evans
Vice Chair	Lachlan McBride
Treasurer	Kevin Plumb
Secretary	Shirley Sidey
Management Committee Members	Sandra Evans Karen May



Back: **SLCMA MC** Lachlan, Mark, Karen, Sandra, Shirley (absent: Kevin)
Front: Saskia, Mayor Greg Williamson

Staff:

Coordinator	Saskia von Fahland (<i>part-time</i>)
Administration Officer	Kristy Thomsett (<i>part-time</i>)
Project Officer	Morgan Thomas (<i>full-time</i>)
Reef Assist team	Alana Campbell, Darrin Fuller (<i>full-time</i>)
Nursery Officer	Susie Tomlinson (<i>part-time</i>)
Revegetation Officers	Winka von Fahland, Peter Whitehead, Justine Dauwerse (<i>casual</i>)



Morgan & Alana



Susie, Saskia & Kristy



Peter

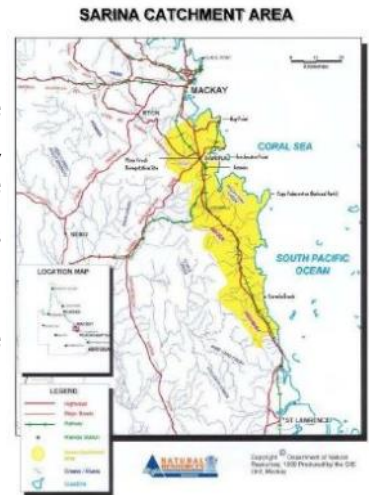


Justine, Winka & Darrin

Organisational Objectives

The objectives of Sarina Landcare Catchment Management Association Inc. are:

- To promote a strategic and integrated approach to natural resource management and biodiversity conservation in the Sarina Catchment area.
- To foster coordination and cooperation between land managers, community groups, industry and government agencies in their natural resource management activities.
- To promote understanding and awareness of the interactions and relationships between the natural systems and resources of the catchment.
- To identify and prioritise natural resource management issues within the Sarina Catchment Area.
- To prepare, coordinate and implement priority action plans identified in the Sarina ICM Strategy.
- To promote sustainable solutions and actions through strong community, industry and government partnerships in catchment management strategies.
- To provide a forum for community and government discussion on natural resource and catchment management issues.



SLCMA's Vision and Goals

Vision for the Sarina Catchment

The Sarina Catchment Area is an economically viable region, which is ecologically sustainable and well regarded as a healthy place to live and work

Goals

- Land Use Planning:** The land resources of the Catchment are managed in an ecologically sustainable manner.
- Land Management:** The most appropriate ecologically and economically sustainable land management practices are adopted throughout the catchment.
- River/Creek Management:** The creek systems are managed in such a way as to enhance and maintain their natural values while providing for the needs of the catchment community.
- Water Management:** The integrity of the natural systems within the catchment are enhanced and maintained while providing water of a suitable quality and quantity to meet the needs of the community.
- Coastal Management:** Management of the coastal area in a way that will ensure the sustainable use of the natural resources
- Vegetation/Biodiversity:** The native vegetation and biodiversity values of the catchment are enhanced and maintained and the natural systems are not further degraded.
- Community Awareness and Involvement:** A community that is aware of the need to maintain and improve the natural resources of the catchment and is actively involved in doing so.

SLCMA Membership 2020/21

Class of Membership	Is membership of the class to be limited or unlimited in number?	If the class of membership is to be limited in number, how?	Limitations relating to the class of membership	Entry requirements for class of membership	Number of members
Government Organisation Member	Unlimited	N/A	1. Full voting rights	Open to nominated Councilors of local authorities within the Association's catchment area, and nominated officers of State Government departments or authorities, or divisions or branches within them.	15
Associate Member	Unlimited	N/A	1. Full voting rights	Shall be opened to nominees of: Companies and Cooperatives carrying out activities within the Catchment area. Local organizations and institutions. Local groups with a direct interest in land use	38
Ordinary Landcare Member	Unlimited	N/A	1. Open to any adult owners or occupiers of land 2. Full voting rights	1. Must be over 18 years of age 2. Annual fee for membership, the amount to be decided at an annual general meeting	99
Junior Member	Limited	There are to be no more than 50 Junior members at any time	1. May not vote 2. Not eligible for election to management committee positions	1. Must be under 18 years of age 2. Must be a registered Junior Landcare member.	0

SLCMA Membership benefits!

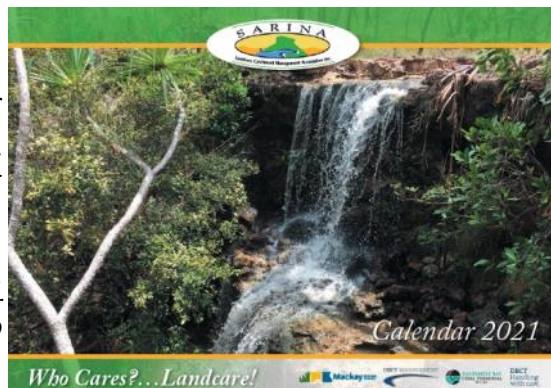


A membership with SLCMA has many rewards:

- ◇ Easy access to Natural Resource Management information and extension
- ◇ Monthly newsletter, meeting minutes, progress and project reports
- ◇ A vote on issues in your catchment
- ◇ A say in the types of projects applied for
- ◇ Up to 10 free local native seedlings from the SLCMA Community Nursery each year
- ◇ Invitations to Natural Resource Management bus tours, field days and workshops

Communication & publications

- **SLCMA Catchment News** is distributed monthly to approximately 180 recipients. The newsletter is a great way for members to keep up-to-date with available funding, workshops, field days, volunteer opportunities and the latest in natural resource management news. *Thankyou to Michelle Landry MP for producing colour copies of the newsletter for our members.*
- **SLCMA website and facebook page** are a great way for the community and members to keep up-to-date with what is happening in our catchment. *Thankyou to Kapow Interactive for their support towards the SLCMA and the associated Central QLD Coast Landcare Network website.*
- **SLCMA Calendar 2021** was well received by members, schools and volunteers. It is a great opportunity to showcase places of interest and critters from around the catchment. It also includes important dates such as meetings, environmental awareness events and cattle sales. *Thankyou to Mackay Regional Council, Dalrymple Bay Coal Terminal PTY LTD and Dalrymple Bay Coal Terminal Management for their contribution towards the printing costs.*



SLCMA Office: resource centre and educational precinct

SLCMA is well supported by Mackay Regional Council; who allow us to operate from the building at 101 Beach Rd. The office is utilised by staff and volunteers in daily Landcare activities and as a resource centre for volunteers, members and landholders to access land management information. We have also created an educational precinct for community members within the surrounding area including: Sustainable food gardens, Sarina Community Native Gardens, Native bees, SLCMA Community Nursery and Water Treatment Train.

Sustainable Food Gardens—The working food gardens are monitored and cared for by volunteers. They provide an opportunity for volunteers to get their hands dirty and share in produce. The gardens include raised garden beds, native bees and worm tubes as an opportunity for community members to learn about growing your own food in a sustainable manner.

Worm farm & composting—Learn about integrating wriggly worms and compost into your backyard garden system; to minimise waste, recycle nutrients and improve soil health.

Water Treatment Train: Wetlands are important to our community because they play a key role in providing biodiversity and hydrological functions vital to keeping the land, water, sea and Great Barrier Reef healthy and productive. This is a working display of a wetland system, demonstrating how natural and artificial wetlands function to remove sediment, nutrients and pesticides from the water that passes through them. The "Water Treatment Train" was installed in 2017 in collaboration with Department of Agriculture and Fisheries (DAF) and, consists of 4 connected chambers with local native water plants and educational signage.



SLCMA Community Nursery

The SLCMA Community Nursery was built in 2003 by SLCMA volunteers and the Sarina Green Corps team. It is utilised as a training facility for the community and a base for the SLCMA Community Volunteer Program; to learn about native plants, plant propagation and general nursery practices. It also allows for the propagation of local native plants for local and regional rehabilitation projects, community projects, gardens and landscaping.

In the past year, the nursery has provided 8437 native plants to the community, for planting back into our catchment. Plants were provided to our Landcare Members through plant allocations (up to 10 free native plants per member per year), Land for Wildlife program and rehabilitation projects such as Landholder Support Program, creekbank rehabilitation projects along Cherry Tree, Marion and Westhill Creeks and Plane Creek Revegetation Site. We also continue to sell plants to the community, with the funds raised, put back in, to support the running costs of the nursery.

We continue to seek as many new local species to propagate and further diversify our species list. Our aim is to keep increasing our species availability and to keep supplying demand for quality, locally adapted plants. Thankyou to the Landholders who have given us permission to collect seed on their property and to some of you who have brought seed in throughout the year.

A big thankyou to our volunteers who assist staff on a weekly basis to keep our seedbank full and tend to the plants in the nursery.

We have had many visitors to the nursery throughout the year all of whom have provided positive feedback about the facility and are impressed with the opportunities it provides for the Sarina community, both socially and environmentally. We have been promoting 'click & collect' plant orders, which has been working well for community members wanting to order plants. Thank you to our Nursery Officer, Susie who is keeping the plant



SLCMA Community Volunteer Program

The SLCMA Community Volunteer Program is now in its 18th year. A big thankyou to all our volunteers past and present. This year we have welcomed a few new volunteers and continued to enjoy the company of our long-standing volunteers. We celebrated the contributions of Neil & Gail Bradley, who have volunteered in the nursery since 2003 and who relocated during the year—we miss their smiling faces but glad we keep in touch. A big thankyou to all of our volunteers who have continued their dedication, coming along every Wednesday, 9am—12noon. Collectively, our volunteers contributed over 1100 hrs in the last 12 months—what a great effort.

The volunteers mainly operate in the SLCMA Community Nursery undertaking cleaning and sowing seeds, potting up seedlings and of course, weeding. They have also been on a few of plant identification and seed collecting trips around the catchment including Plane Creek, Grasstree, Sarina and Hay Point Beaches. A special thank you to our handy volunteers Neil, Peter & Mick who have helped out during year with maintenance and modification of bits and pieces in the nursery....burying pipes, re-hanging gates etc...much appreciated.

At the beginning of the year, our volunteers enjoyed a 're-engagement event', after time apart throughout the COVID closure. This was a great opportunity to get together at the Mackay Regional Botanic Gardens, catch up, join a guided tour and yummy morning tea. A big thank you to Volunteering QLD for supporting this event.

The SLCMA Community Volunteer Program receives much appreciated support from the Mackay Regional Council, Natural Environment Levy.



Coordinated Feral Pig Control Program

SLCMA continues to deliver the Coordinated Feral Pig Control Program across the Rocky Dam, Carmila and Clarview catchments. The program operating since 2008, was co-funded this year, by private landholders, Reef Catchments and Plane Creek Productivity Services through the Plane Creek Farmers Action Group with funding from the Department of Agriculture and Fisheries.

The success of the program is attributed to a coordinated approach with landholders and stakeholders including Plane Creek Productivity Services, Council, Mackay Regional Pest Management Group, Department of Agriculture & Fisheries. It also compliments and aligns with other similar control programs across the wider Mackay Whitsunday region.

The program engages with over 50 landholders across a range of landuses (cane, grazing & horticulture), who participate voluntarily in one or more of the control methods, at different times of the year and at varying levels. The different control methods include trapping, baiting (with Council) and the annual aerial control event. The annual aerial control event was held in December 2020 which led to 494 feral pigs were controlled.

It is great that landholders are working together and recognise that a pig controlled a few kms away is still of benefit to them and their property. The coordinated approach allows for a large area of the catchment to be covered in a short space of time, increasing the potential to reduce feral pig numbers and hence reduce negative impacts on farming land and natural areas.



Sarina Community Native Gardens

In 2009 we began the journey of transforming an area of lawn adjacent to the SLCMA Office, into the Sarina Community Native Gardens. The purpose of the gardens is to demonstrate and promote the use of native plant in gardens and landscaping situations as well as provide an educational opportunity for locals & visitors to learn about local native plants, their benefits & uses in various situations.

The changes over the years have been amazing with many of the plants now flowering, seeding and providing habitat for a variety of native birds and wildlife. Over the time, we have achieved many milestones including the installation and extension of a seasonal wetland, walking track, boardwalk and themed gardens including the sensory gardens and local habitats. A highlight was the official opening in 2013 by gardening guru, Costa Georgiadis.

This year, with funding through *Australian Government Communities Environment Program*, we were able to kick off our **Friends of the Gardens** volunteer program. This program operates Mondays 9-12noon and gives the chance for local volunteers to use their 'green thumb' skills and help out with the enhancement and maintenance of the gardens.

The funding provided an opportunity to utilise the SLCMA Revegetation team to undertake some of the more hard yakka maintenance activities including brushcutting, pruning & chipping branches. We were also able to hold three community workshops for minimal costs to participants, aimed at promoting a diversity of uses of native plants. These included a 'make your own frog hotel' workshop and also engaging Pioneer Bonsai in holding two native bonsai workshops. The workshops were well received by those who participated and it was nice to see familiar and new faces join.

This year we celebrated SLCMA's 20th birthday in the Sarina Community Native Gardens—and what a success! The gardens were looking great, thanks to the dedication, vision and guidance from our Nursery Officer, Susie and the volunteers and onground staff including the Reef Assist Team and casual revegetation team have been working tirelessly in the gardens. It has been an opportunity for the teams to utilise their skills in plant identification, pruning and wood chipping.



Other projects at a glance...

- Rehabilitation of Carmila Beach Reserve**—funded through the Australian Government Communities Environment Program. This project involved the targeted control of weeds and rehabilitation of native vegetation within the Carmila Beach Reserve. Onground works were focussed on two main areas along the esplanade, where weeds such as guinea grass, lantana & pink periwinkle had infested disturbed areas within the native vegetation. Our revegetation team undertook weed control and planting of 100 plants, within the area to encourage natural regeneration of native plants and gain canopy cover as quick as possible. The project also involved students from Carmila State Primary school to participate in a school activity day event— to raise awareness about the importance of coastal zones and how to protect them. This was complimented with hands-on activities of marine debris collection & discussion, making & distributing seed bombs and planting.
- Rehabilitation of Louisa Creek Reserve**—funded through the Australian Government Communities Environment Program. SLCMA worked in partnership with Mackay Regional Council and the community to undertake rehabilitation activities within the Louisa Creek Reserve including planting, watering, weed control and litter collection, to ensure the coastal vegetation is preserved. Louisa Creek Reserve is highly regarded by the community as a valuable coastal environment that provides a buffer between residential land and the important mangrove and estuarine habitat. It is registered under the Land for Wildlife Program and over the years has received support from many project partners to ensure its rehabilitation and protection. The project was able to build on historical onground works and tackle the main environmental issues of weed growth and fire threat due to fuel load.
- Survey and Monitoring of Wetland Fishway**—funded through Australian Government Communities Environment Program. The project engaged and worked alongside *Catchment Solutions* to monitor and evaluate the successfulness of a recently installed rock ramp fishway into the Tedlands wetlands, which provides habitat for recreationally and commercially important fish species. The monitoring provided information about the fish (such as size, number and species) utilising the fishway as well as validate the cost-effective design of the structure for use at other sites throughout Queensland. The project incorporated a community field day; highlighting the importance of connectivity within waterways & wetlands, showcased local fishway designs; and promoted the benefits to the biodiversity and fisheries resources that the fishway and associated wetlands provide.
- Enhancing the Sarina Inlet Trail** —funded through the Australian Government Communities Environment Program. The "Sarina Inlet Trail" is a 400m bush walking track that meanders through a small but diverse area of native coastal vegetation at Sarina Beach. The trail is well utilised by residents and visitors, providing a link between Sarina Beach and Johnson Beach. The project helped to enhance the natural values of the site through onground works including weed control and, revegetation with local native plants. We were also able to engage with the local community through a guided walk and replacement of the sign at the entrance to the trail— highlighting the history, natural values and importance of the area to create awareness of the importance of the area through a guided walk.
- Rehabilitation of Streambanks**—funded through the Australian Government Communities Environment Program. The project assisted landholders to stabilise sections of eroded creekbank at 10 sites along Westhill, Marion and Cherry Tree Creeks. Initial rehabilitation works including engineering works and revegetation were funded through Natural Disaster Relief and Recovery Arrangements in response to severe streambank erosion after Cyclone Debbie. This project supported the landholders in their commitment towards rehabilitating the creekbanks, and providing whole of catchment benefits in a bid to stabilise creekbanks and reduce erosion, in the future. Onground works included weed control, infill planting and supplementary watering.
- Sarina Catchment Waterwatch**—funded through QLD Citizen Science Grants. We are in the first year of the three year project which is undertaking water quality monitoring at four freshwater creeks within the Sarina Catchment. To date, we have recruited and trained 6 community volunteers as citizen scientists to undertake monthly ambient water monitoring. For some of our volunteers it has complemented their studies in Certificate in Conservation and Land Management, which is a great additional outcome, that we will continue to encourage. The project also requires SLCMA staff to conduct baseline water monitoring and sampling on a quarterly basis. The information collected will be used to determine how water quality has changed over time, within the creek systems, which were monitored extensively over 10 years ago. A big thank you to our Waterwatch volunteers; Matt & Ellie Boyd, Caroline Hood, Kath Redmond, Aimee Barclay, Estera Bernard; for their ongoing support for the project.



More projects...

- **Sarina Landcare Support Project**—funded through Mackay Regional Council—Natural Environment Program. This annually funded project supports SLCMA to provide ongoing services to landholders and the general community through activities such as the SLCMA Community Volunteer Program, environmental awareness events, displays at local events, working with stakeholders, coordination of projects and workshops, support for local schools. This project is invaluable for allowing our staff to work in the community and network with project partners and stakeholders—often leading to the development of new projects and sourcing of additional funding from outside the region.



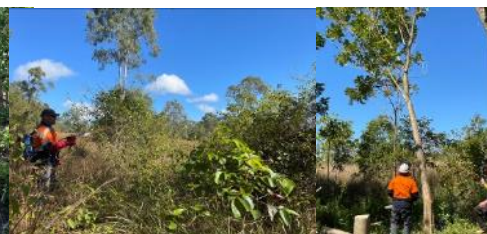
- **DBCTPL Bundwall Project**— Our Revegetation team has enjoyed the opportunity to work on a revegetation site at DBCT—improving the biodiversity and aesthetic values of a bundwall onsite. The site has come in leaps and bounds over the last 6 months through regular watering and weeding. We look forward to seeing it progress coming into its first wet season.



- **Rehabilitation along Cherry Tree Creek**— SLCMA began revegetation on a private property along Cherry Tree Creek in January 2020, in a bid to re-instate riparian vegetation that was effected by Cyclone Debbie in 2017. The project, funded through Reef Catchments, has included planting over 800 plants and more importantly the opportunity to provide regular maintenance of the site including weed control, watering and general maintenance. The hard work of the SLCMA revegetation team to undertake regular maintenance has been integral to the site's success.



- **Reef Assist Program**—funded by QLD Government through Reef Catchments. This program has supported the employment of 2.5 full-time staff to deliver rehabilitation activities across the catchment including supporting 10 landholders with land management support, onground works and free native plants. The full-time two person Reef Assist team have been able to access training and upskilling in Certificate in Conservation and Land Management as well as practical experience on the ground. We thank the onground team Alana (Leading Hand) & Darrin (Revegetation Officer) for their hard work and dedication in often harsh conditions to work across the catchment—tackling weeds, rehabilitating important environmental sites and giving local landholders a helping hand. The Reef Assist Program has been a great initiative and has allowed SLCMA another opportunity to work alongside our project partners and support landholders in the catchment.



Land for Wildlife Program



The Land for Wildlife program is a voluntary program that recognises landholders who are making a significant effort to encourage and provide habitat for wildlife on their properties. This is achieved by conserving and actively managing habitat as well as integrating nature conservation with other land uses such as agriculture, grazing or tourism.

This year we were able to welcome ten new members to the program within the Sarina Catchment. We also had the pleasure of re-visiting four of our current members to discuss topics such as plant identification, weed management advice and re-assess the progress of rehabilitation activities.

Landholders participating in the program receive a number of benefits including; a site visit from our Project Officer, a personalised land management plan (and links to further information), 20 free native plants per year, property re-visits, invitations to field days and workshops, quarterly regional newsletter and the opportunity to communicate with other members of the LfW program via a 'closed' Facebook page.

Due to COVID restrictions last year, we rescheduled the 2019 annual field trip for this year, resulting in two field trips being held during 20/21. The first was "Wage War on Weeds" field trip on 30 October 2020 to the Plane Creek Revegetation Site (aka Brewers Road Reserve). Twelve landholders joined the event, which showcase common weed species and their control options. Thank you to Mackay Regional Council Pest Officers for sharing their knowledge during this event.

The second trip was the "Koala-ty Information Session" held on 11 May 2021. Thirty participants joined the bus trip up the Eton Range where Dr Alistair Melzer from CQUniversity shared his wealth of knowledge about Koalas and their habitat/s. It was an informative day with participants seeing first hand how the recently installed koala wildlife fencing works as well as, a very cute Mumma koala!



The Land for Wildlife program is delivered within the Mackay Regional Council boundaries of the Sarina Catchment by SLCMA and the Pioneer Catchment by Pioneer Catchment and Landcare Group (PCL); on behalf of the Mackay Regional Council Natural Environment Program. This coordinated approach provides consistency across the region and beneficial linkages to other complimentary projects and programs.

Supporting our local schools

SLCMA continues to provide support to our local schools, through the Landcare Support Project funded by Mackay Regional Council Natural Environment Program. This funding provides SLCMA the capacity to support local schools for up to 5 days per year with support such as providing technical advice, delivering educational activities, assisting teachers and students with resources and information and, seeking opportunities for additional funding for complimentary projects.

- National Tree Day with Homebush and Alligator Creek State Schools
- Delivering School Activity Days with local primary schools at Carmila Beach and Sarina Rural Skills Centre
- Hosting of Sarina State High School work experience students



Working Groups supported

SLCMA is proud to support the following working groups:

- Central QLD Coast Landcare Network
- Mackay Whitsunday Regional Pest Management Group
- Rocky Dam Creek Coordinated Feral Pig Working Group
- Healthy Rivers to Reef Partnership
- Mackay Whitsunday Isaacs Wetland Working Group
- Regional Koala Working Group



Supporting Community Events

SLCMA was out & about throughout the year, with Landcare displays, facilitating workshops and working bees at various locations including:

- Sarina Cattle Sales—with Mackay Regional and regional pest trailer
- Great Northern Clean Up at Half-Tide Beach
- Sarina Markets—letting our community know we exist.
- Community Fun Day—Celebrating 20 years of Landcare in Sarina
- Marine Debris Clean Up Sarina and Grasree Beaches
- Guided tour of Sarina Inlet Trail
- Plant identification and seed collecting at Louisa Creek Reserve
- Frog Hotel workshop—a family fun activity!
- Native Bonsai workshops—thanks Pioneer Bonsai
- National Tree Day with DBCTPL & Mackay Regional Council at Louisa Creek Reserve



SLCMA is supported by:



37 Broad Street, Sarina
Phone: 07 4943 2634

