

SLCMA Catchment News 2021



August

Office: 101 Sarina Beach Rd
Postal: PO Box 682
Sarina, QLD, 4737
Phone: (07) 4956 1388
Website:
www.sarinalandcare.org.au
Email:
admin@sarinalandcare.org.au

*Office opening hours:
9am-4pm weekdays.*

Other times by appointment, please call 4956 1388 :)

Staff

Administration Officer
Kristy Thomsett

Coordinator
Saskia von Fahland

Nursery Officer
Susie Tomlinson

Project Officer
vacant

Call us for information:

- ◇ Weed management
- ◇ Plant identification
- ◇ Land management
- ◇ FREE property visits
- ◇ Land for Wildlife

Volunteer opportunities:

- * SLCMA Community Volunteer Program, Wednesday, 9-12 noon.
- * Friends of the Sarina Community Native Gardens, Monday, 9-12noon.

Native plants available for purchase \$3.30 each.

SLCMA Executive 20/21

Chair: Mark Evans

Vice-chair: Lachlan McBride

Treasurer: Kevin Plumb

Secretary: Shirley Sidey

Executive members:

Sandy Evans
Karen May

SLCMA News and events!



SAVE THE DATE ** 16th October 2021 **

Did you know **SLCMA is turning 20** on 16th October 2021? And to celebrate we are holding a free, fun-filled family event at the Sarina Community Native Gardens. There will be lots of fun for everyone including displays, entertainment and interactive activities. Save this date and watch this space for more information :)

We are seeking **Expressions of Interest** for SLCMA Members who are interested in volunteering to be on the **SLCMA Management Committee**. There will be some vacancies at this year's Annual General Meeting, scheduled for October. The SLCMA Management Committee helps to guide the direction of SLCMA and are well supported by our paid staff. If you are interested in nominating to be on the SLCMA Management Committee, please contact us for more information.

Thank you and all the best to Morgan!

A big thank you to Morgan Thomas who has spent almost two years with us as the SLCMA Project Officer. During this time, Morgan has done a great job facilitating a variety of landcare activities from community working bees, field trips and workshops, to supporting the SLCMA Community Volunteer Program and Nursery and, helping to deliver programs including the Land for Wildlife Program and Reef Assist—just to name a few. It has been a pleasure having Morgan as part of the SLCMA team and we will miss his enthusiasm, knowledge and support for Landcare. SLCMA staff and volunteers gathered at the Third Ground Coffee House on the 1 September to wish Morgan Thomas all the best in his new position with Reef Catchments.



Photo: S von Fahland



Photo: K Gill



Photo: S von Fahland

Staff & volunteers at Third Ground; Morgan water sampling and making frog hotels

Artist feature

Another piece of artwork that features in the SLCMA Office is of *Costa Georgiadis* painted by artist Renate von Fahland. The artwork was inspired by Renate's keen interest in gardening as well as Costa's visit to Sarina for the opening of the *Sarina Community Native Gardens* 2013.

You would be right to think 'that name rings a bell', not only is Renate our Coordinator's Grandmother but in the late 1960's Renate and her late husband Dieter, operated "von Fahland's Pottery & Restaurant" on the now named von Fahland's Road at Mt Convenient, on the outskirts of Sarina. At the time, the Pottery & Restaurant was well known for its German cuisine, artwork and pottery with patrons coming from far and wide to dine in and enjoy the experience.



'Costa' painting by Renate von Fahland



Sarina Community Nursery Volunteer Program *by Susie Tomlinson*

We have been having a good turn out of volunteers assisting in the nursery and I always look forward to seeing them arrive, to lend a hand. One Wednesday morning the volunteers and I set off on a wander around the Sarina Community Native Gardens for a guided tour. This was an opportunity to collect seed and cuttings while highlighting the enhancements made to the gardens in recent times and plans for more exciting updates. The Gardens are growing into a fantastic display for showcasing our local plants and promoting what is available in the nursery.

A special mention and thank you to the following people and organisations for their support:

- Leah from Mackay Regional Council's Natural Environment Centre for spending the day in the SLCMA Community Nursery and sharing your knowledge.
- Volunteers Neil, Peter & Kain for helping with some repairs and adjustments around the nursery including the front gates and spreading of crusher dust in the low spots between the nursery and office
- Neil, Peter & Reef Assist team member Darrin for helping with maintenance of the chipper/mulcher
- Alligator Creek State School and Conservation Volunteers Australia for the donation of nursery benches and trolleys that they were no longer using.

If you would like to volunteer in your local community and meet new people while learning about local native plants and their propagation, come along to the SLCMA Community Volunteer morning, every Wednesday, 9am to 12noon. SLCMA Community Volunteer Program is proudly supported by Mackay Regional Council, Natural Environment Levy. For more details contact SLCMA on 4956 1388.



Photos: S von Fahland

Photos: S Tomlinson

L-R: Peter, Kain, Neil & Susie with fixed gate; one of the donated benches; Leah & Susie; Raised walking track; Pam & Shirley working in nursery gardens.

National Tree Day 2021

National Tree Day 2021 was an opportunity for staff from Dalrymple Bay Coal Terminal PL, SLCMA and Mackay Regional Council to head down to the Louisa Creek Reserve and plant 100 native coastal species.

Since 2007, council in partnership with SLCMA and the Coalport Community Recreation Association and other groups have been working hard to rehabilitate and enhance the coastal habitat of Louisa Creek.

Louisa Creek Reserve is registered with the Land for Wildlife Program and is a valuable section of coastal environment providing a buffer between residential land and important mangrove and estuarine habitat.



Photo: contributed by DBCT

Friends of the Sarina Community Native Gardens *by Susie Tomlinson*



Photo: S Tomlinson

Photos: S von Fahland

The gardens have been receiving some pruning and tree removal as we thin out some overgrown areas in preparation for fresh undergrowth plantings. Our friends of the gardens have been assisting with digging out the remaining tree stumps and roots. Sometimes it's hard Yaka but the volunteers get the job done! The recent new plantings are going well, thanks to these guys lending a hand to keep them watered and mulched.

L-R: Mick digging out stumps in gardens; Kain, Vynka, Susie, Justine & Vince helping out in gardens

Weed feature: Urena Burr (*Urena lobata*)

Urena Burr is an annual or perennial branching sub-shrub which can grow up to 1.5m tall with a widespread distribution. Thought to have originated in tropical Asia, it is now regarded as being naturalised in northern and eastern Australia. This species is a weed of waterways, swamps, forest margins, open woodlands, roadsides, waste areas and disturbed sites in tropical and sub-tropical regions. In our local area, it is most commonly seen in over grazed pastures.

Young stems are densely covered in star-shaped hairs, while the older stems become woody with age. The leaves are alternatively arranged, with shallow triangular lobes, toothed margins, and star hairs on both surfaces. The main vein of each leaf will also have 1 or more glands present. Flowers of the plant are pink and typically borne singly on short stalks in the upper leaf forks. The fruit are covered in numerous small, hooked spines, which has enabled it to easily spread throughout our area via animals, humans and equipment. The seeds may also be moved by water. Seeds can also build up in the soil seed bank and germinate profusely when conditions are suitable.

Urena burr was widely used in Africa and South America as a fibre crop and can apparently be eaten raw. When not in flower or fruit, it can easily be confused with Chinese Burr (*Triumfetta rhomboidea*), however Chinese Burr does not have glands under the underside of the leaves, and its flowers are yellow opposed to pink like *Urena* burr.

Urena burr can be removed manually through pulling seedlings before flowering and fruiting. Likewise, slashing can help to reduce this chance of producing seed and also encourage grass species around the base to grow. There are a range of herbicides registered for use to control *Urena* burr, depending on its location in the landscape and landuse. Washing down vehicles and farm machinery before moving between areas will also ensure that seeds are not carried to 'clean' areas.



Photos: S. von Fahland

Urena burr leaf shape and pink flower.



Photos: Brisbane City Council

Urena burr seed pods covered in hooks.

SLCMA Community Nursery 'Plant of the Month'

This month's 'Plant of the Month' is **White flowered Bauhinia** *Lysiphyllum hookeri* **Family: Caesalpiniaceae**

What is in a name? *Lysiphyllum* Greek **lysis** a loosing **phyllon** leaf; *hookeri* after Sir William Joseph Hooker, professor of botany and director of Kew Gardens.

Form: A small tree, often multi-stemmed, spreading canopy; flaky bark.

Leaves: A compound leaf, consisting of two round, stalkless leaflets, 4-7 longitudinal radiating veins; deciduous.

Flower: White flowers; petals 3-4cm long; January to November.

Fruit: Flat, oblong woody pods with flat seeds; March to April.

Habitat: Monsoon forests, vine thickets, beach forest and open forests.

Distribution: Endemic to QLD, occurs in North eastern QLD and south to coastal central QLD from sea level to 500m.

Notes: Has potential in gardens and as a street tree in dry areas. Produces showy white flowers.



Photo: J Jennings

Flowers and leaves of White flowered bauhinia (*Lysiphyllum hookeri*)

The "**Plant of the Month**" is currently available from the SLCMA Community Nursery. Landcare members are eligible to receive 1 free "Plant of the Month", throughout that month. This and other native plant species are also available for purchase at \$3 each. All plants are grown from locally sourced seed in the SLCMA Community Nursery by SLCMA staff and the SLCMA Volunteer team.

Carmila school students learn about coastal areas

A school activity event was held at Carmila Beach with the Carmila State School in June. Students and teachers participated in three hands-on, educational activities including making of 'native seed bombs' which were then distributed within the nearby coastal dunes, a marine debris clean up and sort and planting of native plants within the coastal esplanade. Students gained an understanding about the role and importance of Carmila Beach and coastal dunes in general as well as ways to help protect and enhance these important natural areas. This event was supported through the Communities Environment Program.



Photo: A Campbell



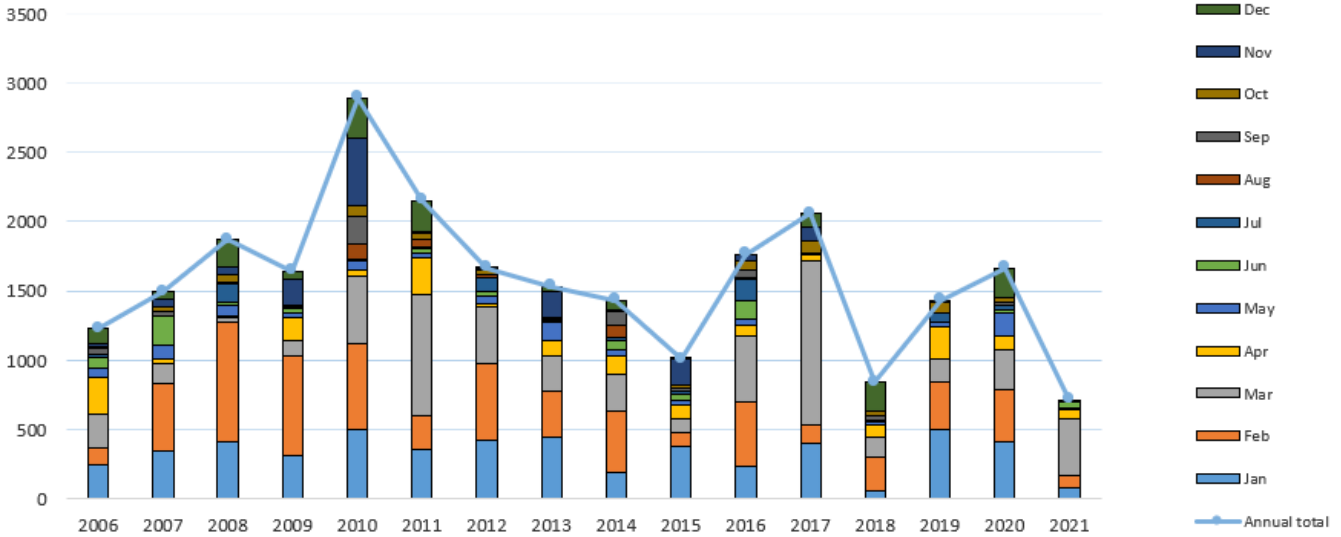
Office: 101 Sarina Beach Rd
 Postal: PO Box 682
 Sarina, QLD, 4737
 Phone: (07) 4956 1388
 Website: www.sarinalandcare.org.au
 Email: admin@sarinalandcare.org.au

What SLCMA Membership does for you !

A membership with SLCMA has many rewards:

- ◇ Easy access to Natural Resource Management information and extension
- ◇ Monthly newsletter, meeting minutes, progress and project reports
- ◇ A vote on issues in your catchment
- ◇ A say in the types of projects applied for
- ◇ Up to 10 free local native seedlings/year from the SLCMA Community Nursery
- ◇ Invitations to Natural Resource Management field days and workshops
- ◇ Copy of the SLCMA Annual Report

Monthly rainfall for SLCMA Office, 2006 -2021 (inc annual total)



**16TH
OCT**

SAVE THE DATE
More details coming soon!

**10:00 AM
TO
1:00 PM**

**20 YEARS OF
LANDCARE IN SARINA**

Just for fun!

What did the flower tell the other flower after she told a joke?
 "I was just pollen your leg!"

How does a flower whistle?
 "By using its tulips"

What did one cactus say to the other cactus?
 "You're looking sharp!"

Central QLD Coast
Landcare
Network

A partnership for the natural resource management of catchments in the Central Queensland Coast Bioregion: Pioneer, Sarina & Whitsunday Catchments.

Containers for Change

SLCMA has registered with Containers for Change for virtual donations and we are hoping that you will consider using our identifier code — **C10002138**. We also welcome physical donations of eligible containers to our office, feel free to contact us on 4956 1388, to arrange drop-off. Thankyou to those who have donated your containers, so far we have raised **\$274.20** —Thankyou :)



[Find us on facebook](#)

SLCMA is proudly supported by:



Sarina
Community Bank®
Branch

together with
RURAL BANK

Proudly printed by

Michelle **LANDRY** MP

Federal Member for **Capricornia**